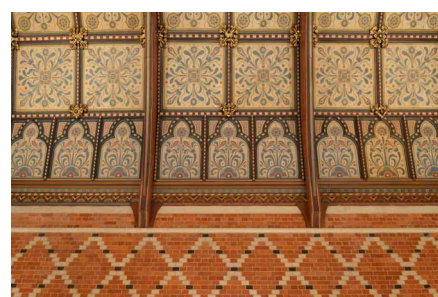
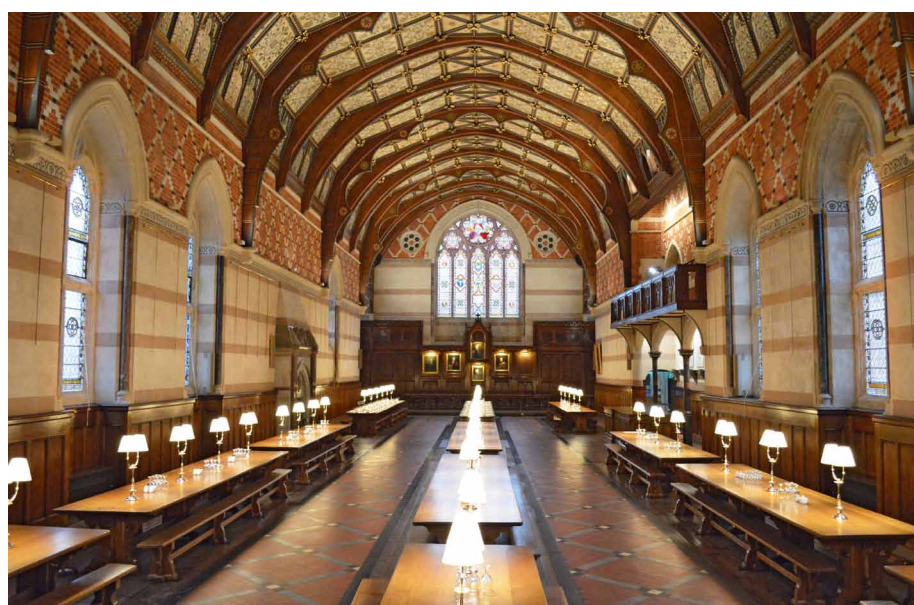


# the brick

THE NEWSLETTER FOR KEBLE ALUMNI • ISSUE 67 • HILARY TERM 2019 • [WWW.KEBLE.OX.AC.UK](http://WWW.KEBLE.OX.AC.UK)

## Victorian Glory

Over the past five months, the College Hall has undergone a major restoration. The brick, stone and timber have all been cleaned, the tables and benches repaired, the portraits restored, the lighting improved and various unfortunate interventions from past decades reversed. The results are stunning.



The Hall had to be closed whilst we doubled the size of the servery and installed a second service lift. This provided the opportunity to complete a programme that began back in 2003 with the cleaning of the Hall ceiling and continued with the introduction of an access lift and repairs to the windows in 2017.

In planning the project, we reviewed architect William Butterfield's drawings and various old photographs in the archives. One consequence is that we have restored the original configuration of the tables and benches. Everyone will remember a Hall with six tables – three shorter ones 'above' the fireplace and three very long ones below it. Those three very long tables were originally three lots of three: at some point they were, for reasons yet to be discovered, joined together. Now they are back to twelve tables.

The Butterfield drawings also show the outline of a large rectangular object, labelled 'sideboard', which was placed below the balcony. There is no evidence that Butterfield actually designed such a piece and, over the decades, various objects have occupied that space. We now have a new sideboard, based on Butterfield's design for the sideboard in the Warden's dining room, which will greatly improve both served and self-service operations.

Various other discoveries were made – for example, that the slate serving tables at either end of High Table were heated by a series of gas jets (which helps explain why the walls above them remain discoloured despite four separate cleans). And we've also solved the mystery of which six portraits were originally mounted in the

central screen behind High Table. Five were still in place, but whose did Kidd's, the fourth Warden, who was only 14 when the Hall opened, replace? The answer, thanks to brilliant detective work by Faye McLeod, the College Archivist, is Talbot, the first Warden, who will shortly be back where he belongs.

Complementing the Hall is the new servery, which should greatly improve traffic flow, as well as being a much more pleasant place to be in, with windows into both Liddon and Newman Quads. The next (and final) challenge will be to remodel the kitchen itself.

**Roger Boden**  
Bursar, 1965 PPE

*This transformational work has been made possible thanks to generous philanthropic support from Keble alumni and friends.*

### in this issue:

college news • student life • alumni news • forthcoming events





## Harris Society

Honorary Fellow, James Edelman, Justice of the High Court of Australia, gave an erudite and engaging lecture on Law, Justice and Politics at the Law Society in London. Drawing on personal experience, court cases and quotations from prominent lawyers and academics, James explored the tension between generalised and individual justice. In doing so, he examined the conflict between common law and equity, the field of statutory construction, and the difference in approach sometimes taken by judges sitting at trial and those sitting on appeal.

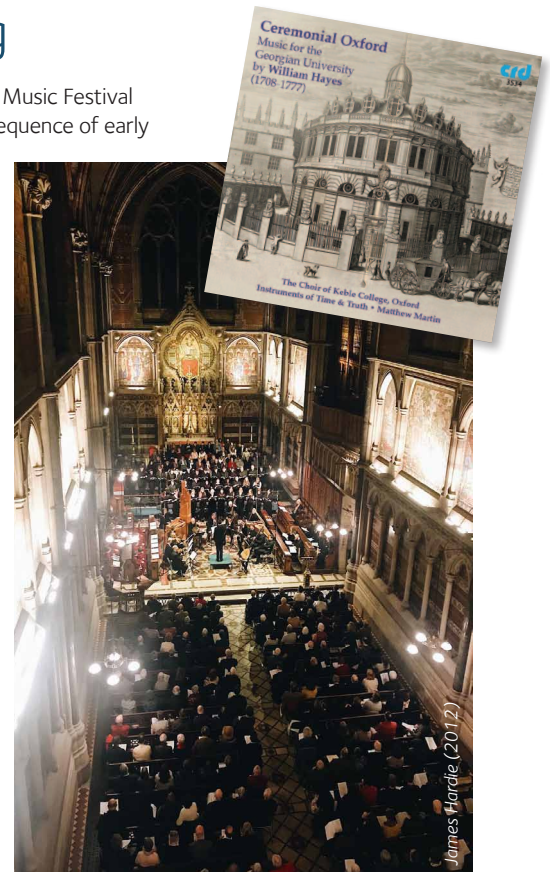
In James's view, individualised justice is unlikely to become dominant over generalised justice. This is partly because of those aspects of the rule of law relating to the consistency and predictability of law, but also due to the role of universities, where the teaching of law as an independent discipline is reliant on the existence of generalised principle which they can teach. Good news for the future of Jurisprudence at Oxford!

## Early Music-making

Since it was founded in 2012, the Keble Early Music Festival has fast grown into Oxford's premier annual sequence of early music events. This year saw a particularly impressive line-up, opening with The Tallis Scholars, and culminating in Monteverdi's towering masterpiece, the Vespers of 1610, performed to a packed Chapel by Keble College Choir, a dazzling array of soloists, and the English Cornett and Sackbut Ensemble.

KEMF maintains a strong student and educational core. On Wednesday there was an exemplary masterclass given by Martin Baker, our festival recitalist. A new departure this year was a spirited and impressive baroque strings workshop for schoolchildren led by members of Oxford-based period instrument orchestra Instruments of Time & Truth in association with the Oxfordshire County Music Service.

For those who want to bring the music home, Keble Choir's critically acclaimed CD on William Hayes is available online via Amazon at <http://amzn.eu/ffQOe0I>. Also, look out for the Choir's collaboration with the Academy of Ancient Music on Valls' *Missa Regalis*, due out later in 2019.



James Hardie (2012)



## The Visitor

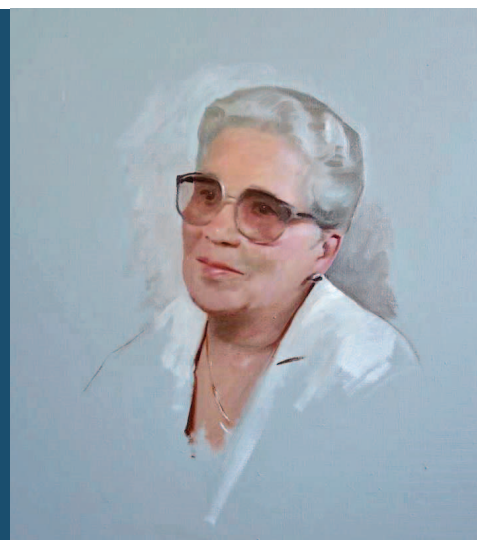
The Most Revd Justin Welby, Archbishop of Canterbury, presided at a service in the College Chapel on Monday 28 January. Numerous Keble students, Fellows, and staff heard the Archbishop preach on a theme of the importance of reconciliation, during which he used the College's crozier that belonged to Edward Talbot. The service was a plainsong mass, which the College Choir sang beautifully. After the service, the Archbishop was able to meet many of the congregants at a reception and lunch in the Warden's Lodgings.

## H B Allen Portrait

Award winning artist and Keble alumnus Jamie Coreth (2007 Archaeology and Anthropology) has completed a specially commissioned portrait of Miss Heather Allen, in whose honour The H B Allen Centre was named. The new painting will be unveiled as part of the St Mark's Day celebrations on April 28.

Heather "Mickie" Allen was founder of The H B Allen Charitable Trust. Their £25m donation kick-started the transformation of the old Acland site into the new H B Allen Centre.

Jamie, who won the Young Artist Award at the BP Portrait Awards in 2016, said "It was a wonderful surprise to have been asked by my former college to paint a portrait for them. Posthumous portraits can be made rather difficult due to limited source material and, given what a low profile Heather Allen kept, this was certainly the case here. As I learnt about her life, I was struck by her extraordinary humility and generosity, insisting that her inherited wealth be almost entirely directed to charitable causes."







Sergey Zelinski

## Denisovan Discovery

Professor Tom Higham and former Keble DPhil, Dr Katerina Douka (2005), have played a key role in new research identifying the earliest evidence of some of the first known humans – Denisovans and Neanderthals. A multi-disciplinary team from the UK, Russia, Australia, Canada and Germany collaborated on a detailed investigation over five years to date the archaeological site of Denisova cave, situated in the foothills of Siberia's Altai Mountains. The research, published in *Nature*, puts a timeline on when Neanderthals and their enigmatic cousins, the Denisovans, were present at the site, and the environmental conditions they faced before going extinct.

## Endeavour in College

It was a pleasure to welcome the cast and crew of *Endeavour* back to Keble last July. The College features in 'Apollo', the second programme of Series 6, in which Endeavour investigates the death of an up-and-coming young astrophysicist and his girlfriend.

Set in 1969 to coincide with the moon landing, it is the first episode that Shaun Evans both directs and stars in, and features also Roger Allam as DCI Fred Thursday, Sara Vickers as Thursday's daughter Joan, and Sophie Winkleman as the wife of a young Oxford academic. For anyone who missed it when it aired on ITV recently, the series is now available on DVD.



## Keble's Grave

In the last few months, the College has paid for the restoration of John Keble's grave. The grave is situated in the churchyard in the village of Hursley near Winchester where John Keble was vicar from 1835 until his death in 1866. His adoring wife Charlotte died a little over a month after Keble. They lie side-by-side. The restoration was achieved with the help of the Mausolea and Monuments Trust (MMT), which owns and maintains the mausoleum of the Heathcote family in front of which the graves are situated. Sir William Heathcote was a student of Keble at Oxford and, as the local squire, offered Keble the living of Hursley. It was Sir William and a group of friends who got together after Keble's death to raise funds for a new Oxford college.

**Ian Johnson**  
Chairman, MMT



## Kitchen Departure

After more than 31 years at the College, Deputy Executive Chef Sharon Murphy left Keble at the end of January to devote more time to her family business, which she manages with her husband. A well-attended gathering in the College Bar gave the Keble community a chance to say goodbye.

## Exploring Keble's Wine

Last September in southwest France, I travelled to Bizanet to explore where Keble's wine (Sauvignon Blanc and Merlot) is grown, produced and bottled. At the end of a long driveway flanked by ranks of lush vines laden with plump grapes, Monsieurs Barsalou (senior and junior) welcomed me to Domaine Saint Maurice.

Created in 1898, Domaine Saint Maurice has been farmed through six generations of the Barsalou family on the edge of the Corbières wine region. I arrived four days into the harvest and was shown around in the only way possible for vigneronns – through the senses. We scooped up handfuls of the cool sandstone soils, listened to the prevailing wind against which the vines are carefully oriented, burst the sweet grapes in our mouths, observed the architecture of the vines, including a traditional Greek method of securing the end vines, and hovered our noses over the first grape juices

emerging after four days of pressing. Was it possible that I had just seen and tasted the base of what would be served at Keble next year? Yes, this Sauvignon Blanc will be ready for drinking by March 2019. *Chin chin.*

**Dr Fiona Ferbrache**  
Lecturer in Geography



**Monsieurs Barsalou of Domaine St Maurice, producers of Keble wine**



## Quizzzy Keble

Brave Keble students have put their knowledge publicly to the test in televised gameshows. Michael Green (2015), Ellen Pasternack (2013) and Thomas Player (2013), captained by Rose Atkinson (2015), have followed in the footsteps of many quizzzy Keble alumni before them by competing in University Challenge.

Thomas Player, currently reading for a DPhil in Chemistry, and Ellen Pasternack, currently reading for a DPhil in Zoology, said that particular highlights of the experience were their buzzer-practice sessions, meeting the formidable Jeremy Paxman, and the surreal experience of watching themselves on TV during the College viewing party. The team won their first round against the University of East Anglia in October but were sadly

beaten by Durham University in the second round that aired in January; however, the students enjoyed the experience so much that they said they would do it all over again.

JCR President, Sam Edwards (2017), was a contestant on ITV'S 'The Chase' which aired in January. Sam's team were rushed about the studios and in Sam's words, "before I knew it, I was staring Bradley Walsh in the face, coming a cropper to questions about Sex and the City!" Whilst Sam made it back for the 'final chase', the team sadly couldn't beat the chaser who was on red-hot form.

Both TV quiz shows provided the Keble community with great entertainment so very well done Rose, Michael, Ellen, Thomas and Sam!



## Student Access

On 26 January we travelled to the Impact Hub in central Birmingham to take part in an Oxbridge event hosted by The Access Project (TAP), a programme which works with bright students from disadvantaged backgrounds to help them gain access to top universities. We spent the morning working closely with a group of 10 or so Year 12 students, discussing some unseen source material and answering their Oxbridge-related questions in the hope of dispelling some of the myths that they had heard about these universities.

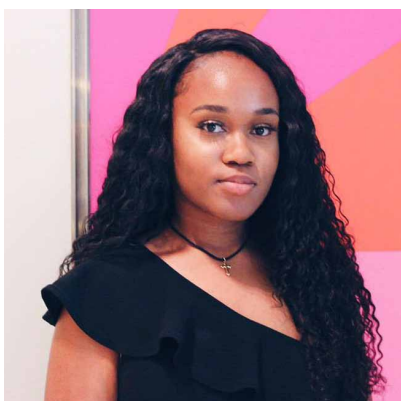
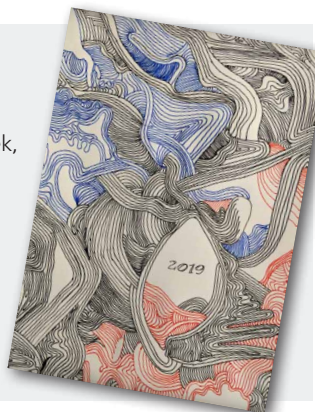
To get a sense of the passion, the eloquence, the sharp intellect and broad-minded disposition that these future candidates evidently possessed in spades was not only heartening, but self-affirming, reminding us that we had achieved something quite impressive by making it into Keble ourselves, and motivating, helping us realise again how fortunate we were to have all the opportunities Keble offers, and pressing us to make good use of them.

**David Alexander** (2018), **Alice Peat** (2018), **Sophia Cerullo** (2018)

## KAF Fig.

The annual Keble Arts Festival took place in seventh week, with a packed programme of events on the theme of Culture Chaos, including a DJ workshop, drama crash course and the perennially popular open mic night.

The Festival has published its beautifully produced magazine, *Fig.*, in a digital format for the first time this year. All work is by current JCR and MCR students. <https://issuu.com/keblefig/docs/fig2019>



## Social Mobility Awards

Renée Kapuku (2015 History) was presented with an upReach Ten Award at the Student Social Mobility Awards. The awards were hosted by social mobility charity upReach at the House of Lords in December, and are supported by the Social Mobility Commission. The upReach Ten Award is given to the top ten students nationally who have achieved, or have the highest potential to achieve, outstanding success academically, professionally and/or personally. Awards were also presented in categories including Biggest Champion of Social Mobility, Best Mentor and Highest Impact Initiative. UpReach, which is currently led by Keble alumnus John Craven (2012 PGCE), helps disadvantaged students from across the UK realise their potential.





## Panthers' Varsity

Keble was at the heart of the Panthers' Varsity victory on 2 March. OURFC Women's second team thoroughly deserved their hard-earned 10 points to 5 victory over Cambridge 2<sup>nd</sup> XV at Grange Road. There were 6 Keble women in the squad, captained by Keble's Lucy Miles (2016 PPE), with both tries being scored by Keble's Maddie Hindson (2016 Chemistry).

*Photo l-r: Keble Alumni Oakley Cox and Leanne Robinson, Panthers players Maddie Hindson, Susy Rees, Claire Castle, Lucy Miles, Zoe Heighes, Nina Jenkins, Incoming Blues Secretary 2019-20 Shekinah Opara, Panthers Team Manager Emma Biddiscombe and current Blues Captain Abby D'Cruz.*



## KA Featured Report

In September 2018, Emily Tipper went to the Danum Valley Conservation area in Malaysian Borneo for 10 days to study tropical forest ecology. Danum Valley is home to more than 1,300 species and is one of the most important expanses of pristine lowland forest remaining in SE Asia. The field trip was organised by the Oxford Biological Sciences department as a 3<sup>rd</sup> year module. The aim of the course was to gain first-hand experience of the diversity of tropical forests, to learn about the processes that have led to this biodiversity, and to develop practical fieldwork skills. The first five days of the trip were spent learning different practical methods that can be used for research in the field to study birds, mammals and to identify insects to species level. Students learned how both the intensity of logging and the rehabilitation afterwards impact how well a forest is able to regenerate. As well as learning about biodiversity, Emily also gained a better understanding of the complexities of conservation and sustainable management in tropical forests, which is vital if these forests are to be preserved for future generations.

From a report written by **Emily Tipper** (2016), edited by **Nela Scholma-Mason** (2011).



## DPhil Prize

Christopher Roth (2012) has been awarded the 2019 Edgeworth prize for outstanding DPhil thesis in Economics for his thesis entitled "Essays on Beliefs and Economic Behaviour". Christopher received a Distinction in his MPhil, and then progressed to the DPhil, which he completed in 2018. He is currently a postdoctoral fellow at the Institute on Behaviour and Inequality.



## Laidlaw Scholarship

Congratulations to Keble undergraduate students Jake Topping (2015 Maths) and Magdalena Georgieva (2015 Maths and Stats), who have been awarded the Laidlaw Undergraduate Research and Leadership Scholarship. The award is given to exceptional undergraduates to help

them pursue a research project during the long vacation, designed and defined by the student, at any world-leading research institution. The award also includes a leadership programme which leads to an Institute of Leadership and Management (ILM) qualification.

Magdalena's research proposal is on "Connecting models of disease spread over realistic population networks and over the mathematical 'fully-mixed' society", and she plans to go to INSERM in Paris to undertake the work. Jake's project is entitled "The student has become the master: what can recent advances in artificial intelligence teach us about our own learning?", and he will be travelling to New York University to pursue his research.

## All-Innovate

Keble College was one of the over 20 colleges which participated in the inaugural University-wide idea competition, All-Innovate, organised by the Oxford Foundry. Six undergraduate and graduate teams applied from Keble to compete for the £20,000 prize money. Experienced entrepreneurs, Keble alumni Andy Clayton (1995), David Bailey (1982) and Heli Helanummi-Cole, Policy Fellow in Entrepreneurship at Oxford Saïd, judged the teams. Based on their evaluations, two teams advanced to the intensive "boot camp" stage in February. Although the Keble teams did not advance to the finals, they will have the opportunity to discuss and develop their ideas further with the help of our judges.

## New Year's Honour



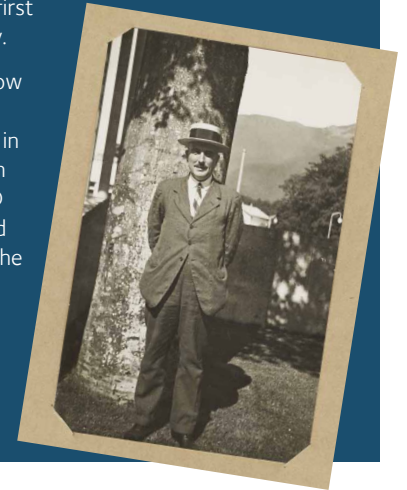
Congratulations to Professor **Hugh Griffiths** (1975), whose achievements have been recognised in the 2019 New Year Honours list. Professor Griffiths, a world authority in the field of radar research, has been appointed an OBE (Officer of the Order of the British Empire) for services to Engineering. He holds the THALES/Royal Academy Chair of Radio Frequency Sensor Systems at UCL.

## Mapping the life of OGS Crawford

OGS Crawford (1886–1957) went up to Keble in Michaelmas 1904. He made the controversial switch from the “Greats” course to Geography, in order to better pursue his dreams of a career in archaeology. Geography, then a subject in its infancy, allowed him to experiment with new methods for research. He produced innovative distribution maps of prehistoric artefacts and refined his field archaeology skills. Crawford had an eccentric and varied career, pioneering the application of aerial photography to archaeology, founding the journal *Antiquity* (still going strong today) and becoming the first Archaeology Officer at the Ordnance Survey.

It was this rich and varied life that I, as a fellow Keble alumna, explored in a series of object handling sessions at the Pitt Rivers Museum in November 2018 as part of the Being Human Festival. These sessions came out of my PhD research into Crawford's life and archives and will be developed into a larger exhibition at the Pitt Rivers in Spring/Summer 2020. You can follow the progress of my research and the exhibition on twitter @wcoloursburntin.

**Beth Hodgett**  
2010



## Year Groups on Facebook

In preparation for the 150<sup>th</sup> Anniversary, and hoping to help bring alumni from the same year together, our Year Group Reps and the Alumni and Development Office have set up Facebook groups for 1971 and for all year groups between 1979 and 2014. Search for your Keble year under Facebook Groups and reconnect with old friends!



## Ghosts 2018

Our Alumni Ghosts returned on a wet and miserable Saturday at the beginning of Michaelmas Term to take on the current teams in a day celebrating Keble sport. Throughout the day, we held Men's and Women's Football and Rugby fixtures as the older Keble generations took on the new. Unfortunately the Netball match was cancelled due to unsafe conditions.

All Ghosts teams were triumphant in their matches, save in the 1<sup>st</sup> Men's Football, where the Ghosts played a good close game but, despite performing creditably, lost 3-1.

**On 6 July 2019 we will be celebrating the 50<sup>th</sup> Anniversary of the Football Ghosts fixtures and so we will be inviting all Football Ghosts players to join the Summer Dinner in celebration. Invitations to be sent out in due course.**

## Space Achievement

Our congratulations to Dr Pat Irwin (1984 DPhil Physics) and his colleagues at the UK Cassini team who were awarded a prestigious 2018 Sir Arthur Clarke Award for Space Achievement in Academic Research. Better known as 'Arthurs', the awards, given by the British Interplanetary Society, recognise outstanding achievements in all space activities.

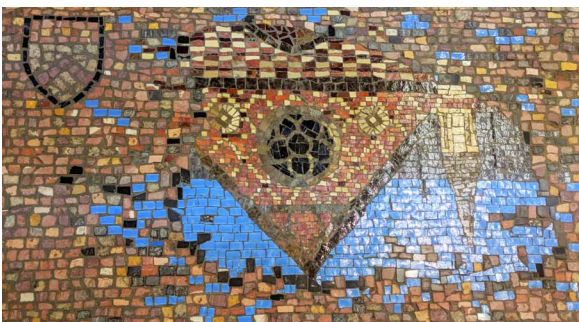
Dr Irwin, a Professor of Planetary Physics and tutor at St Anne's College, and his team mates were recognised for their huge contribution to the Cassini-Huygens mission which spent more than 13 years exploring the Saturn system, travelled over 4.9 billion miles and revealed in extraordinary detail some of the wonders of Saturn.





## Keble Reflections

After attending a beginner's mosaic class, Daniel Claff (2011) set himself an ambitious creative project reflecting on his time at Keble. The result is a beautiful 16" by 32" mosaic concrete table re-creating a photo he snapped during his first year: a reflection of the Chapel in a Pusey Quad puddle. It uses Italian smalti for the puddle with granite stones for the pavement. Altogether, the 2000-stone tabletop weighs about 7 stone. Daniel was kind enough to show the Warden and Jenny Tudge the beginnings of the project when they visited New York last year and we are so pleased to see the wonderful finished work of art!



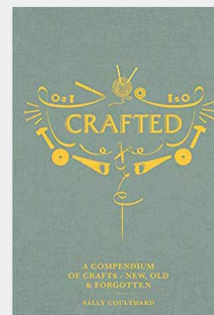
## Looking for London Venues

Would you or your company be interested in hosting a Keble event? Do you have access to an interesting venue in central London? If you would like to give back to Keble by hosting an event, please get in touch with us at [alumni@keble.ox.ac.uk](mailto:alumni@keble.ox.ac.uk) to help us grow our venue options for events such as our London Lectures and Entrepreneurs' Evenings. The ideal space would be able to seat 100-120 guests.

## Alumni in Print

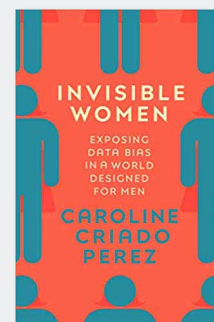
### **Crafted**

*Crafted: A Compendium of Crafts – New, Old and Forgotten* is a definitive visual guide to all things handmade by **Sally Coulthard** (1994). This volume joins over 20 other books published by her about homes, craft and outdoor spaces, including *The Little Book of Building Fires*, *How To Build a Shed*, *The Hedgehog Handbook* and *The Little Book of Snow*.



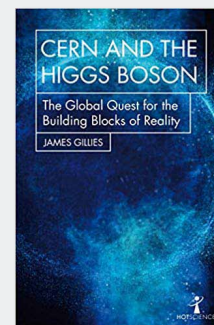
### **Invisible Women**

Award-winning campaigner and writer **Caroline Criado Perez** (2009) brings together case studies, stories and new research in *Invisible Women: Exposing Data Bias in a World Designed for Men*. From government policy and medical research, to technology and urban planning, the book illustrates the hidden ways in which women are forgotten, and the impact this has on their health and wellbeing.



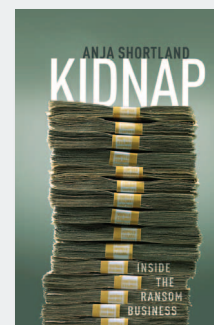
### **CERN and the Higgs Boson**

In *CERN and the Higgs Boson: The Global Quest for the Blocks of Reality*, **James Gillies** (1985) weaves together the scientific and political stories of CERN's development, documenting how particle physics has evolved from being the realm of solitary genius to a global field of human endeavour, with the Large Hadron Collider as its frontier research tool.



### **Kidnap**

**Anja Shortland** (1991) presents a compelling account of a hidden world in *Kidnap: Inside the Ransom Business* based on extensive interviews with those who deal with kidnapping worldwide – insurers, security consultants, victims' employers and families, and professional negotiators on both sides.



### **British Sociologists and French Sociologists in the Interwar Years**

In a new volume drawn from his DPhil thesis, **Baudry Rocquin** (2005) offers a comparative study of the development of sociology in Britain and France between 1920 and 1940. He charts the tension between differing schools of thought, illuminating a divide that is still crucial in understanding the present situation between Continental Europe and the United Kingdom.



## Keble College Music Society

see [www.keblemusic.co.uk](http://www.keblemusic.co.uk) for music events  
Alumni welcome

**Saturday 27 April**  
**Black, Asian and Minority Ethnic Dinner**  
For alumni and students from 7.00pm in Hall

**Sunday 28 April**  
**Leavers' Tea with the Warden**  
With parents/guardians in Hall

**St Mark's Day Service**  
The Chapel 5.30pm

**Saturday 4 May**  
**Degree Day for 2018 Finalists**  
Details to Graduands were sent in January

**College Ball**  
Gaia Machina  
[www.kebleball.com](http://www.kebleball.com)

**Friday 10 May**  
**Eric Symes Abbott Memorial Lecture**  
By composer James MacMillan  
O'Reilly Theatre, 5.30pm

**Thursday 16 May**  
**Keble Debate**  
World War II Poets  
O'Reilly Theatre, 5.30pm



### Wednesday 22 May London Lecture

By **Mary Portas**, discussing her book *Work Like a Woman* with Caron Bell (2006)

At Grant Thornton, 30 Finsbury Square, EC2A 1AG

### 29 May - 1 June Summer Eights

**Saturday 1 June**  
**Young Alumni BBQ**  
Alumni (matric year 1999 and later) are warmly invited to an informal BBQ in College.  
Hayward Quad, 1.00pm

**Rowing Society Dinner**  
Open to all

More details and booking information online at [www.keble.ox.ac.uk/events](http://www.keble.ox.ac.uk/events)  
Enquiries to [alumni.events@keble.ox.ac.uk](mailto:alumni.events@keble.ox.ac.uk)

**Saturday 8 June**  
**College Garden Party**  
First year graduates and 2<sup>nd</sup> Year undergraduates and their families have been invited.

Alumni can apply for tickets from the Alumni and Development Office. Newman Quad 3.00pm

**Saturday 6 July**  
**2019 Summer Dinner**  
Drinks reception and Dinner in Hall. Open to all Alumni and their guests (regardless of year, course or subject).

Special invitations have been sent to **Football Ghosts** who are celebrating their **50<sup>th</sup> Anniversary**.



@KebleAlumni



Keble College Alumni group



Alumni group and Entrepreneurs group

**Saturday 6 July**  
**60<sup>th</sup> Anniversary Lunch**  
Celebrating 60 years since matriculation in **1959**.  
Invitations were sent in March

**Keble Association Trustees Meeting and AGM**  
The de Breyne Room of the SCR  
4.00pm (AGM at 4.30pm)

**We are working on an exciting programme of events to celebrate our 150<sup>th</sup> Anniversary.**

**Details and booking information coming in Summer 2019.**

## 2019

### Reunion and 40 years of co-education

Saturday 21 September

## Your Data

We've updated our Privacy Notice for alumni, donors and friends to make it easier for you to understand how we process your personal data. Our new Privacy Notice aims to more clearly describe how we collect your data, how and why we use it, and, most importantly, your rights and choices. We're making these improvements as part of our response to the new EU General Data Protection Regulation. You can view our Privacy Notice at <https://www.keble.net/privacy-notice>

If you would like to request a hard copy or if you have any questions about our privacy notice or about your personal data, or if you want to provide updates to your data and make any changes to your communication preferences, please contact: The Data Manager, Alumni and Development Office, Keble College, Oxford, OX1 3PG. Email: [dev.off@keble.ox.ac.uk](mailto:dev.off@keble.ox.ac.uk) Tel: 01865 282303

## Contacts

**Alumni and Development Office**  
Keble College  
Oxford OX1 3PG

[www.keble.ox.ac.uk/alumni](http://www.keble.ox.ac.uk/alumni)  
[dev.office@keble.ox.ac.uk](mailto:dev.office@keble.ox.ac.uk)  
[alumni@keble.ox.ac.uk](mailto:alumni@keble.ox.ac.uk)

**Jenny Tudge** (Director of Development) [jenny.tudge@keble.ox.ac.uk](mailto:jenny.tudge@keble.ox.ac.uk) (01865 272794)  
**Camilla Matterson** (Deputy Director of Development) [camilla.matterson@keble.ox.ac.uk](mailto:camilla.matterson@keble.ox.ac.uk) (01865 282506)  
**Veronika Kovacs** (Alumni Relations Manager) [veronika.kovacs@keble.ox.ac.uk](mailto:veronika.kovacs@keble.ox.ac.uk) (01865 282338)  
**Martha Baskerville** (Alumni Relations Officer) [martha.baskerville@keble.ox.ac.uk](mailto:martha.baskerville@keble.ox.ac.uk) (01865 272799)  
**Philip Clarke** (Data Manager) [philip.clarke@keble.ox.ac.uk](mailto:philip.clarke@keble.ox.ac.uk) (01865 282303)  
**Sharon Thomas** (Executive Assistant) [sharon.thomas@keble.ox.ac.uk](mailto:sharon.thomas@keble.ox.ac.uk) (01865 272794)  
**Rebecca Coker** (Major Gifts Officer) [rebecca.coker@keble.ox.ac.uk](mailto:rebecca.coker@keble.ox.ac.uk) (01865 282036)

**the brick**

*the brick* is written, designed and produced by the Alumni and Development Office with the assistance of current Keble students and staff.

Editing and setting by Boriana Boneva (Communications Manager).  
Printing and distribution by Hunts. Proofreading by Les Hearn (1968).

*the brick* is copyright © 2019 Keble College, Oxford, OX1 3PG.

All rights of the individual contributors are reserved. No part of this publication may be reproduced or translated in any form, by any means mechanical, electronic or otherwise, without prior consent of the publisher. The views expressed are those of the writers and do not necessarily reflect those of the Governing Body of the College.

**Contributors and photographers:** Roger Boden (1965), Daniel Claff (2011), Jamie Coreth (2007), Abby D'Cruz (2015), Sam Edwards (2017), Fiona Ferbrache, Adrian Grayston (1972), Hugh Griffiths (1975), James Hardie (2012), Tom Higham, Beth Hodgett (2010), Pat Irwin (1984), Ian Johnson, Renée Kapuku (2015), Yvonne Murphy, Ellen Pasternack (2013), Thomas Player (2013), Nela Scholma-Mason (2011), Pippa Thynne, Emily Tipper (2016), Sergey Zelinski (Russian Academy of Sciences).