

the brick

THE NEWSLETTER FOR KEBLE ALUMNI • ISSUE 50 • MICHAELMAS TERM 2010 • WWW.KEBLE.OX.AC.UK

New Warden presented to the Archbishop of Canterbury

On 22 September a group of Fellows accompanied the then Warden elect, Sir Jonathan Phillips, to Lambeth Palace to present him to the Archbishop of Canterbury, the College Visitor. This is a formal requirement of the College statutes. The Archbishop and his staff extended gracious hospitality and the Keble party was treated to a private tour of the palace and library. The photograph was taken at the spot where the pope had posed for formal photographs the previous week.



From l: Simon Whalley, Dr Simon Hunt, Professor Tony Phelan, Dr Jan Grabowski, Dr Ian Archer, The Archbishop of Canterbury, Sir Jonathan Phillips, Lady Phillips, The Chaplain, Dr Diane Purkiss
Back row: The Bursar, Professor Paul Taylor, Dr Stephen Payne

The New Chaplain



The Revd Jenn Strawbridge, Keble's first woman chaplain took up the post on 1 September. Jenn knows Keble well as she has been Assistant Chaplain to Revd Allen Shin for the past year and did her master's degree in Theology here in 2001-2. In the interim, she returned to the US for ordination and subsequent service in large parishes in Connecticut and Virginia. Jenn will be reading for a DPhil in New Testament Theology and Classics along side her duties as Chaplain.

Teaching Excellence Awards



Three Fellows were awarded teaching excellence awards in October. Professor James Edelman, Fellow in Law, won the accolade for his development of the Mooting (mock court) skills component in the Legal Research and Mooting Skills Programme for Jurisprudence students. Dr Diane Purkiss, Fellow in English, and former Research Fellow, Dr Alex da Costa were praised for a new course, designed to improve students' appreciation of Middle English literature through examining common themes such as romance, idyllic and threatening landscapes, protest and heresy, and the remembrance of death and war.

Inaugural Lecture



Professor Chen (left) with his wife Anna and their son Richard. Back row: The Warden, Vice-Chancellor Professor Andrew Hamilton and Professor John Ockenden

Professor Gui-Qiang Chen, Keble Professorial Fellow, presented his inaugural professorial lecture at the Examination Schools in November. Professor Chen explained how the mathematical tool of partial differential equations can be used to help understand a vast range of natural behaviour; applications include the impact of shock waves, tornado formation, or the flocking of birds. A world leader in the study and application of PDEs, Professor Chen's work continues to invigorate the development of the field.
www.maths.ox.ac.uk/people/profiles/gui-qiang.chen

Keble College Music Society - see www.keblemusic.co.uk for Hilary Term Events. Old Members Welcome

January

- 17 Hilary Term Begins
- 29 75th London Dinner Brooks's,
60 St James's Street London. Booking Form was enclosed with The Record 2010, also available on the College website: www.keble.ox.ac.uk/alumni/events/75th-london-dinner

January/February

- 31-3 Keble in South Africa
Visit by The Warden and Director of Development, all Old Members in Southern Africa will be notified of events in Cape Town and Johannesburg

February

- 7-11 Keble in Thailand
Visit by Jenny Tudge, Director of Development, Old Members in Thailand will be notified of events
- 18 Richardson Lecture
5.30pm Pusey Room
Dr Edward Harcourt, Fellow and Tutor in Philosophy
Attachment Theory, Character, and Naturalism
- 19 Douglas Price Society Debate and Dinner
New time of year and format for this event
Invitations were sent to all Society members in November

March

- 3 Keble London Lecture
Dr Nick Cutler, Fellow and Tutor in Geography
Vikings, Volcanoes and Vegetation in Iceland
Venue to be confirmed
- 18-27 Keble in Singapore, Hong Kong & Beijing
Visit by The Warden and Director of Development
All Old Members in East Asia will be notified of events

March/April

- 28-4 Keble in Los Angeles, Vancouver and San Francisco
Visit by The Warden and Director of Development
All Old Members on the Western Seaboard of the United States will be notified of events

May

- 1 Trinity Term Begins
- 1 St Mark's Dinner
St Mark's Day Service in Chapel is followed by Dinner for present members of the College, including all classes of Fellows

May

- 6-7 Oxford European Reunion 2011 – Paris
Invitations to Keble Old Members will be sent out in the New Year. www.alumni.ox.ac.uk/news_and_events/events/oxford_european.html
- 7 Inauguration of Keble Irish Alumni Group
Lunch at Hillsborough Castle, Northern Ireland. Invitations will be sent out in February to all Old Members in the Republic and Northern Ireland
- 14 Degree Day for 2010 Finalists
Invitations will be sent out early in 2011.
College Ball - Save the Day – Details in the Hilary Term *brick*. All Old Members welcome
- 27 Eric Symes Abbott Memorial Lecture
Chapel 5.30pm. Dr Richard Chartres, Bishop of London
The Word in Print: The Authorised Version 1611-2011

June

- 4 Rowing Society AGM and Dinner
Invitations are extended to all members of the Rowing Society
- 11 Garden Party
Old Members can apply for tickets from The Warden's PA. Invitations will be extended to second year undergraduates and first year graduates to invite their families

July

- 9 Summer Dinner and
1986 25th Anniversary Dinner
Summer Dinner booking form will be in the Hilary Term *brick*. The 1986 year group will be sent invitations in March
- 10-22 Keble College Choir Tour to Eastern United States
Visiting Boston, Washington and New York. Accompanied by The Warden and Director of Development. See Page 8 for more details of 2011 Overseas Visits by the Warden and Director of Development

2011 Reunion Weekends

- Friday 1 and Saturday 2 July 1967-71
Friday 16 and Saturday 17 September 1972-76
to coincide with 2011 OU Alumni Weekend

Contacts

Alumni and Development Office, Keble College, Oxford OX1 3PG • www.keble.ox.ac.uk/alumni • dev.off@keble.ox.ac.uk
 Jenny Tudge (Director of Development) jenny.tudge@keble.ox.ac.uk (01865 282308)
 Duncan Macintyre (Associate Director) duncan.macintyre@keble.ox.ac.uk (01865 282506)
 Ruth Cowen (Alumni Relations Officer) ruth.cowen@keble.ox.ac.uk (01865 282338)
 Camilla Matterson (Senior Development Officer) camilla.matterson@keble.ox.ac.uk (01865 272794)
 DB Lenck (Development Officer) db.lenck@keble.ox.ac.uk (01865 272799)
 Annéka Salvat (Development Assistant) anneka.salvat@keble.ox.ac.uk (01865 282303)
 Trish Long (Warden's PA) trish.long@keble.ox.ac.uk (01865 272700)

Interview

The Warden, Sir Jonathan Phillips was interviewed by Jennifer Hunt (2009 PPE) and Laura Wilson (2008 English) in the Lodgings.

What made you decide to be Warden here?

I was looking for a new challenge in a new environment as the process of devolution in Northern Ireland, in which I had been heavily involved, came to a conclusion.

Have you enjoyed your time so far in the job and the Lodgings?

I speak also on behalf of my wife Amanda when I say that we have both enjoyed ourselves immensely so far. The place is very striking, but it is the people who make it what it is. Now that the work on the Lodgings is complete, it's great to be able to invite people in - staff, Fellows, students, family, friends. It really is a very good location. Keble is a very welcoming college.

How has university changed since your time at Cambridge?

In many ways. In a short interview you can't deal with some of the most substantial changes; student finance, for example, is hugely different. I think I'll focus on something which is perhaps less obvious, the extent to which relationships between students and tutors are much less formal nowadays. I don't mean that tutors are less demanding, but there seems to me to be much less of a hierarchical relationship than I recall. Helpfully, I think, we've lost a lot of deference.

How would you encourage students to apply to Oxford?

I think the only way is to encourage them to come and visit, and to talk to us. By doing that, potential students, who might be either wholly unaware of what we are or have their heads stuffed full of strange and intimidating ideas, can see that there is actually a very welcoming and supportive environment which provides unparalleled academic opportunities.

What interests you about 19th Century Irish history?

I became interested in it simply because as an undergraduate I attended a particularly impressive set of lectures, then did a special subject based on them and got hooked. I think one of the great issues for me in historical study is separating myth from reality. The Irish experience is an extremely good example of the way in which the two became intertwined. In a certain sense myth determines the course of the future in ways that you would not have expected if you focused on the underlying reality.

How did this interest affect your time as Permanent Secretary to Northern Ireland?

I had no idea at all when I finished my PhD that I would come to regard it as an important part of my professional formation, nor any expectation that I would end up working on the Northern Ireland peace process. When I did so, it was with huge enthusiasm. I'm very strongly of the view that you can't seek to tackle issues of conflict resolution unless you have considerable understanding of the background. That might seem blindingly obvious, although recent experience of international affairs might suggest

that there is a need for more emphasis on it.

Knowing your interest in singing, have you any plans for Keble music?

I would like to see all kinds of music flourish. One development that is going to have a profound impact is the installation of the new organ in the Chapel. It will be one of the finest in Oxford, which will give that genre of music a much more significant profile. I don't want it to be the exclusive focus of musical life in the College, but at the same time we should celebrate what I think will be a real gem.

What else are you interested in?

I am a hill walker, not vertiginous walks, just rambling. It's partly the natural beauty but also the opportunity to interact with creatures who don't have contradictory opinions. This was particularly valuable when I was dealing with Northern Ireland; I hope it will be rather less significant while I'm at Keble! But it's the way I find refreshment, having short periods of time when I'm communing with myself.

What is your role in the Acland project?

I arrived at a time when the plans were already well developed, as can be seen by the splendid model on display in the hall of the Lodgings. My principal role is to find and encourage wealthy philanthropists to contribute to this extraordinary development. However, it's very important to recognize that alumni support is not just about bricks and mortar, it's also about such things as student support and sustaining research.

Where do you see Keble in 5 years?

I want to see the College proud of its academic achievements and sustaining and developing its tradition of access, something that isn't going to be easy following the Browne Review. I'd like to see substantial progress on the redevelopment of the Acland site. Much as I would like to predict that in 5 years' time it will be finished, it is a long term project involving a period of fundraising and then building. In addition to that, I want to see the College remaining at ease with itself. That's difficult to define, but it's really about maintaining the atmosphere of welcome, warmth and supportiveness.



Katy Fallon



Robin Geffen enters CCB



Rob Judges

Robin Geffen with the Chancellor, Lord Patten and page

Robin Geffen (1976, Philosophy and Theology) was admitted to the Chancellor's Court of Benefactors in a ceremony at the Divinity School in September. The CCB is the highest level of recognition for donors to the University.

Founder and MD of Neptune Investment Management, Robin has been a significant benefactor to Keble for the last 15 years. He supported the Sloane Robinson Building and provides ongoing support to Keble Rowing Club via his company, Neptune. Recently he enabled the College to establish the Edward Geffen Memorial Research Fellowship and Tutorship in Logic and the Robin Geffen Career Development Fellowship in English.

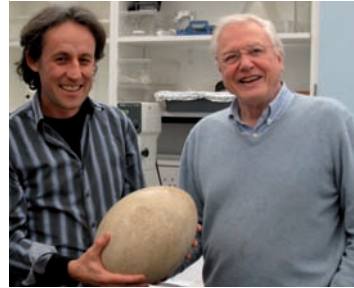
Robin is Deputy Chairman of the Vision for 2020 Campaign Board, and together with George Robinson (1975), Campaign Chairman, he has made an enabling gift for the Alumni & Development Office. Robin is also a member of the Douglas Price Society. In recognition of his long-standing and transformational support for Keble, Robin was awarded an Honorary Fellowship earlier this year.

Lodgings Lift



The transition from one Wardenship to the next provided an opportunity for the undertaking of essential repairs and renovations to the Lodgings. During a twelve week period over the summer the plumbing, heating and electrical systems were replaced and on the exterior re-pointing and roof repairs were carried out and several broken stone chimera on the Parks Road side re-carved. In addition the configuration of the ground and first floor rooms were returned to the original, restoring some of the Victorian decorative style.

Elephant Egg



Dr Tom Higham (Research Associate in Archaeology) and Sir David Attenborough with the complete egg of the Elephant bird of Madagascar. It was Radiocarbon dated at the Oxford Radiocarbon Accelerator Unit as part of Sir David's new BBC natural history programme on Madagascar scheduled for January 2011.

Andrew Lloyd Webber in College



Steve Karsley

Andrew Lloyd Webber and an ITV film crew came to the College in September to film, *Andrew Lloyd Webber: A Passion for Pre-Raphaelites*, one of a series of five documentaries to be aired in the Spring. He did several pieces to camera, one in Liddon Quad and one in front of the *Light of the World*. During his visit he spoke of his admiration for the College and its architecture.

Progress on the Pipe Organ

Organ Voicing

In mid-October five Choral and Organ Scholars, along with Music Fellow Simon Whalley, gathered to discover how some of the sounds for the new organ would balance in the acoustic of the Chapel. Organ builder Kenneth Tickell brought a small voicing machine (a miniaturised organ, pictured), together with a selection of organ pipes that represent some of the main sounds of the new organ. The sound levels of these pipes were tested with and without the singers. Setting the correct volume and tone at an early stage is an important part of the voicing process as the tonal levels of the rest of the organ will be carefully balanced to these pipes back at the workshop. It is an essential part of all organ building but of paramount importance in a highly reverberant and complex acoustic such as the Chapel.

www.tickell-organs.co.uk/news.htm and www.keble.ox.ac.uk/about/chapel/new-organ



Jenn Strawbridge

Graduate Focus – Diverse DPhils

Keble has a large and vibrant community of Graduates; currently 262 of 677 students are studying at this level. They are fully involved in College life and through their diverse interests create a stimulating and engaging environment. Here is a selection of current Graduates studying for their doctorates.



Sophie Kershaw (2003)

Sophie took a BA in Mathematics at Keble and a Masters at Manchester. Her research focuses on drug discovery techniques for colorectal cancer. She develops mathematical models for cellular behaviour in intestinal tissue, incorporating the sub-cellular biochemistry alongside it. The resulting framework will be used by the pharmaceutical industry to assist with the early stages of drug development in anti-cancer treatments.



Aditi Nafde (2008)

Aditi is researching how medieval manuscripts give clues to how people read literature in the Middle Ages; their attitudes to books, story telling and written documents. Her work will give scholars a new insight into how authors wrote texts, how scribes created manuscripts, and how they used them.



Christopher Sibley (2002)

Chris studied Physiological Sciences and then took a Masters in Neuroscience at Keble. His research involves the investigation of a naturally occurring gene-silencing pathway to turn off the expression of harmful genes recently implicated in the molecular pathways underlying Parkinson's disease. He is developing exciting leads that could prove to be novel therapies for specific inherited cases of Parkinson's. A talented hockey player he has three Blues and also plays for Keble.



Aparna Pal (1994)

Aparna did her Pre-Clinical at Keble, qualified as a doctor in 2000 and specialised in Diabetes and Endocrinology. In 2007 she was awarded an MRC grant to research genetic overlap in the pathogenesis of Type 2 diabetes and cancer. She aims to define why some individuals are more susceptible to Type 2 diabetes than others, work which has been awarded Clinical and Basic Science research prizes at the 2009 and 2010 Diabetes UK conferences. Aparna juggles her research with a young family.



Bianca Reisdorf (2008)

At the Oxford Internet Institute Bianca is researching why certain people do not use the Internet. In policy debates and empirical studies, non-users of the Internet are often placed into one homogeneous group. Bianca's research applies quantitative and qualitative techniques to analyze characteristics of non-users, so that strategies for digital engagement can be more effectively targeted. Bianca was awarded a Full Blue for competing in the 2010 Boat Race, and won Gold both in the British and European University Championships in the Lightweight Eight.



Edward Pitt (2009)

Edward graduated in Mathematics at Kent University in 2002, studied a second degree in Civil Engineering at Warwick and was a chef before coming to Keble to research methods to measure climate change technologies. There are a variety of engineering schemes proposed that will either remove carbon dioxide from the atmosphere or counter its global warming effect. The purpose of Edward's DPhil is to develop methods that can be used to compare the different schemes' impacts on the environment, economy and society.

Workshop visit



Simon Whalley, The Chaplain, Bob Bradshaw holding a new pipe, and Chris Bradshaw in the workshop.

A small group including major supporters of the organ project, Nathan Burkey (1993) and Bob Bradshaw (1939), went to the of Kenneth Tickell's workshop to view construction progress. They were confronted with a warehouse almost completely filled with the Keble organ and were very impressed with the number of component pipes and as well as the evident complexity of building an organ. A large frame to house the pipes was under construction and many pipes both wooden and metal were in various stages of completion, all made by hand. It was gratifying to see components of the old organ, including the Butterfield pipes and some

of the original woodwork, incorporated into the new frame. The group were able to handle the pipes and hear some played which completed a very rewarding and fascinating experience.

James Hawkes



New frame for the organ incorporating some carved woodwork from the original.

Terrific Telethon Team



The student Telethon Team in September 2010:
Standing (l to r): Hannah Kirby, Rob Nixon, Nadia Singh, Ashley Massey, Michael Gajdus, James Cross, Olumide Famuyiwa and Muj Hameed Seated (l to r): Jenny Cutting, Karis Eaglestone, Emily Fry, Nathan Graff, and Melanie O'Sullivan Relaxing(!): Greg Tucker Not in photo: Antony Rickard

Michaelmas Music

Jason Sengel



Above: Tokaji Piano Trio in the Andrew and Christine Hall Music Room



Left: Angela Sheard

It has been a very successful term for the Music Society. We have had record attendances at our events, which, as ever, remain free and open to all. Our concerts included a moving performance from the Oxford-based Tokaji Piano Trio (playing Shostakovich to an audience of over 70) and a recital from the award-winning pianist Alexander Soares. We also hosted Vijay Jagtap and Hanif Khan in an intimate performance of sitar and tabla in the Pusey Room, bringing a less well-known musical tradition to a very appreciative audience. With the gracious support of the new Warden, the first Warden's Recital was extremely successful. This will continue to be a feature of the termly music calendar, as will the orchestral concert which was a stirring performance of Tchaikovsky's 'Nutcracker Suite' conducted by Kieran Finn this term. Angela Sheard (2010 Medicine) was appointed new Music Scholar.

Kabir Bhalla
President, Keble College Music Society

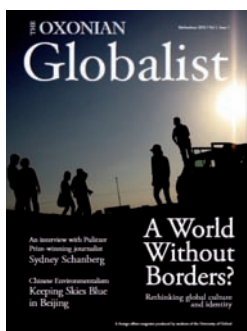
Excellence in Chemical Research



Russell Egdell

Hongliang Zhang (2008 DPhil) has won the Society of Chemical Industry First Prize for Excellence in Chemical Research, for his oral presentation at the 17th Joint Annual Conference of the Chinese Society of Chemical Science and Technology in the UK and the Society of Chemical Industry Chinese UK Group. His research focuses on epitaxial growth of advanced functional materials and the self-assembly and characterization of nanostructures which have potential applications in several fields including solar cells and data storage.

The Globalist



The Oxonian *Globalist* is a new international affairs magazine, produced and written entirely by students, that draws upon Oxford's incredible diversity of perspective. It is a chapter of Global21, which is a network of student-run magazines at premier universities around the world. The *Globalist* is working hard to secure its permanence at Oxford, and would sincerely appreciate any contribution that can be made to its cause. www.toglobalist.org

Michael Brodsky (2010 Washington Visiting Student)
Co - Managing Editor

Among the Carthaginians



Earlier this term we were treated to a Frank McGuinness's *Carthaginians* at the O'Reilly Theatre. Set in Derry after Bloody Sunday, the play shows a group of friends waiting in the graveyard as they try to make sense of the tragedy and violence which has occurred. The play was touching, incredibly haunting, and had moments of humour. The production had many Keblites behind the scenes, with Tatty Hennessy (English 2008) Director, Laura Wilson (English 2008) Producer, Louisa Claire Dunnigan (English 2009) Marketing Manager, Daniel Travers (Chemistry 2007) being generally useful and James Cross (English 2009) Set Designer. One Keble student was on stage, Olivia Cooley (English 2009) playing Sarah and mastering the role with her beautiful singing.

Jenni Hunt

Ghosts Football

Two Ghosts football games took place in October again this year. An experienced second XI Ghosts side pushed the College hard until the superior fitness of the younger College side saw them pull away 4-1 winners in the end. Special praise for some of the senior Ghosts, Andy Airey (1985) and Murray Hunt (1984), and junior Ghosts, Andy Hallsworth (1992), Nigel Owen (1995) and Nick Talbot (1988) and for the referee, Graham Warren (1969). The first XI game ended in a tightly contested 4-4 draw with Will Spencer (1997) appearing to have won it at the death, before the College grabbed a last minute equaliser. Thanks to all the Ghosts who played, and to the College for hosting.



Andy Tingle (1999)

First XV Rugby



Aden Brierley

Having lost so many experienced players at the end of last year, 1st XV were looking to a healthy fresher intake to maintain their success. This duly arrived in the form of second row Tom O'Hellier, flanker Ed Donnell, and nuggety hooker/blindsides Dan Barnes, who have put in some outstanding performances so far and have reinvigorated Keble's pack. After missing last season through injury, 2nd year Ben Horsley has stepped into Bob Pittam's sizeable shoes at Number 8. Indeed, all four featured in a narrow loss to Keble Ghosts at the end of 0th week, a fixture which again proved highly enjoyable for all involved.

Unfortunately, the first game of the season against rivals Teddy Hall came too soon; the team had yet to gel properly and, after leading 18-7, succumbed to a fight back from an experienced Hall pack. Putting this early setback behind them, however, the squad went from strength to strength, registering bonus point wins in the following league fixtures including a 32-5 triumph over a much-hyped Magdalen side. The team now looks forward to competing for the League Shield in Hilary Term.

Charlie King

A Darker Shade of Blue



Back row from l: Chris Gamble, Charlie Auer, Julian Bubb-Humfries and Ed Lent Front row from l: Natalie Hickling and Bianca Reisdorf

In November, three of Keble's Blues rowing triallists took to the foetid waters of the tidal Thames for the annual Fours' Head of the River Race. They comprised the men's heavyweights Charlie Auer (2010) and Julian Bubb-Humfries (2007) (the stern pair of Isis III coxless four) and lightweight woman Bianca Reisdorf (2008) in a quadruple scull. Both crews recorded excellent performances and laid down a marker to Cambridge in this first high-profile event on the calendar.

Keble has a bumper crop of Blues rowers this year. In addition to those already mentioned, Alec Dent (2007) stroked Isis last year, Natalie Hickling (2007) joins Bianca in the lightweight women's squad

and Christopher Gamble (2009) is making a challenge in the lightweight men's squad, where he has the company of Ed Lent (2005). Although the final Blue boat selection will not be made for several months, the date of the Boat Race is set for Saturday 26 March 2011 see www.theboatrace.org. The lightweight rowers compete against Cambridge at the Henley Boat Races which will take place on Sunday 27 March. See www.henleyboatraces.com

Julian Bubb-Humfries and Lynn Edwards

Anyone for Golf?



The 2011 Oxford Alumni Intercollegiate Golf Tournament is on Friday 8 April at Frilford Heath Golf Club, Abingdon. Nick Kane (1964) is looking for players to join the College team. Keble came second this year and is hoping to better that in 2011. For more information and a booking form please email Nick at: nick@kanes.org. It's not the handicap but the taking part that counts!

John Keble buried on Norfolk Island?

James Urry (1972) has brought to our attention a curious story surrounding his discovery of the grave of John Keble Barasau on Norfolk Island.

Norfolk Island is part of New South Wales. It was used to grow food for the prisoners in Botany Bay, then as a penal colony for re-sentenced convicts from NSW, and was later settled by Pitcairn Islanders, descendants of HMS Bounty mutineers.

John Keble Barasau, apparently named after the founder of the College, was not a Norfolk Islander but a Melanesian and probably a missionary. His gravestone at St Barnabas Church is in the area of a Mission station. The Mission was relocated from New Zealand and a church built in 1882 as a memorial to Bishop Patteson who was killed perhaps by those not keen on receiving the Word. It has a stained glass window designed by Burne-Jones and, more interestingly, internal decoration by Melanesians and Pacific Islanders using shell.

John Keble was very interested in the Melanesian Mission as the following extract shows. *In 1861, Mrs Selwyn came home for a few months from New Zealand, and Mr and Mrs Keble pressed her to re-visit Hursley, which she did in September. The Kebles had always, and specially since 1854, when the Bishop and Mrs Selwyn became personally known to them, taken a lively interest in that great work at the Antipodes. Mr Keble used to pounce upon the 'Mission Field', or any private letter from New Zealand, that brought tidings of the Bishop's riskful Melanesian cruises. Mrs Selwyn's visits to Norfolk Island were full of interest to him, and so were all details connected with the training of young natives at Auckland. "I do not like" (he said to a friend) "anyone so much as to drop in to tea at St John's College, without my knowing it".* Abridged from: Frances Wilbraham, *Recollections of Hursley Vicarage*. Monthly Packet of Evening Readings [edited by Charlotte Mary Yonge], Vol. 7, 1869, p. 556.



The grave of John Keble Barasau died 28 April 1868



A frigate bird, a common symbol, on the end of a pew at St Barnabas Church



The Man Behind the Mask

John Bridcut (1971) has written and directed a revelatory portrait of musical genius, Edward Elgar in a documentary, *The Man Behind the Mask*, aired on BBC Four in November. Often regarded as the quintessential English gentleman, Edward Elgar was someone quite different John suggests, who was awkward, nervous, self-pitying and often rude. He searches for the hidden Elgar by piecing together letters, musical cues, and by talking to today's top Elgar interpreters, including Sir Colin Davis, Sir Mark Elder, and Vladimir Ashkenazy.

The Poetry of P A T O'Donnell



Peter O'Donnell (1937) studied History and went on to teach for most of his adult life at a preparatory school, Orwell Park, Suffolk after a period in war service. He was a gifted poet, publishing two slim volumes during his life time, and cartoonist and these two talents have been brought together in a book by a former pupil, Robin Gilbert. Published by Shepton Dragon 2010 (ISBN 978 0 9567053 0 3)

InsideJapan

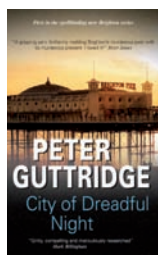


After teaching English in Junior High Schools in Toyota City for three years after graduating, Alastair Donnelly and Simon King (both 1994) started a travel company InsideJapan which has just celebrated its 10th

Anniversary. Known for its small group tours and self-guided independent travel itineraries it won Silver in the British Travel Awards in 2009 and this year in October Best Small Tour Operator at the *Guardian* and *Observer* travel awards. See: www.insidejapantours.com

Old Members in Print

City of the Dreadful Night



Peter Guttridge (1970) has published the first of a dark crime fiction trilogy set in Brighton called *City of the Dreadful Night*. Peter has been the *Observer's* crime fiction critic for the past eleven years and is the author of six, award-winning satirical crime novels. He is described as 'one of the UK's most accomplished crime writers' and the book, 'gritty, compelling and meticulously researched'.

Mice



Gordon Reece (1982), based in Victoria, Australia has published a new novel *Mice* in Australia which is due to come out with Pan Macmillan in February in the UK. Gordon was a teacher and briefly a personal injury lawyer before becoming a full-time writer and illustrator in 1999. *Mice* aimed at 16+ readers is a powerful story which addresses bullying, fear, secrets and morality and will make readers question themselves and what they would do when pushed to the limit.

Current challenges and the College response

One of the many good things that I have observed on my arrival at Keble is the strong enthusiasm of Old Members for the College's continuing welfare and future development. That is reflected in the fact that through our annual telethon and in a variety of other ways just over a third of our alumni have made either a one-off gift or a commitment to regular giving. As I've said to many individuals since I took over from Averil Cameron at the beginning of October, that support is very greatly appreciated. It is also critical to our ability to continue to deliver the excellent teaching and research which are the hallmarks of Oxford.

That last comment becomes even more relevant in the light of the challenging financial environment into which the whole of the university sector is moving. As I write this we have seen the publication of the Browne review, the announcement of the outcome of the Government's comprehensive spending review and the Government's decision (subject to Parliamentary approval) to enable universities to raise tuition fees for undergraduates to a maximum of £9,000 per year. However, much of the detail of the new regime remains uncertain and may only become clearer when a promised White Paper is published over the course of the winter. In particular we do not yet know what conditions may be attached to the charging of fees above £6,000.

While it is far from straightforward for Oxford to respond to fast developing public policy because, quite reasonably, different perspectives exist given the likely impact of various aspects of the new regime on particular groups within the Collegiate University, we are not simply waiting upon events. Much thought is being given to what the impact of all this may be on student support; to the implications for our College and University commitment to widening access; and to the possible financial impact of complying with a new regulatory regime of the kind envisaged in the Browne review.

What we do know now is that in the context of the expenditure cuts the Government has already announced, especially in relation to the teaching grant to universities, if Oxford charges the maximum projected fee of £9,000, there will still remain a very significant gap between our income and the costs of sustaining the much valued tutorial system.

In consequence, there is one certainty in this changing world: our continuing reliance on the generosity of Old Members to enable us to maintain and develop what we do. The Talbot Fund is one very important aspect of that, supporting bursaries and scholarships, providing funds for sport and music and drama, and helping to preserve the buildings which are not only an important part of the Keble tradition but also very widely admired. Beyond that, however, Old Members are involved in the life of the College in many different ways. Some of them make other donations, for example, endowing research activity, and enabling us to develop our plans for the Acland site which will, we hope, enable Keble to have an even more prominent place at the heart of the University. Some of them offer contributions in kind, for example coming to College to talk to current students about their own professions and careers, offering encouragement to some of our non-academic activities and contributing to our governance structure. We value all of this.

So I thank you very warmly for all that you already do. And as we contemplate the future, I want not only to encourage those who have already helped us to continue doing so, but also to ask those who have not yet thought of contributing to the future of the College and its students, to consider whether, in John Keble's phrase, it is part of our "common task" to do so.

Sir Jonathan Phillips
Warden



Katy Fallon



Fundraising Report 2009-10

by Jenny Tudge, Director of Development

Fundraising activity has continued to generate increasing returns with cash income in 2009-10 reaching **£2.58mn**. This builds on previous years' figures of £1.49mn in 2008-9 and £652k in 2007-8. The step-change reflects the increased staffing and resources within the Alumni & Development Office generously supported by two of our Old Members, George Robinson and Robin Geffen.

In addition new funds (single gifts and pledges) received in 2009-10 reached £3.82mn – the majority of which is pledged gifts in support of the College Campaign. Although still in pre-launch phase, fundraising for Keble's *Vision for 2020* including the redevelopment of the Acland site and the establishment of an Advanced Studies Centre, has already attracted substantial support. The fund total now stands at £7.6mn.

While Associate Director Duncan Macintyre and I are focused on the Campaign, The Talbot Fund continues to flourish under the management of Senior Development Officer, Camilla Matterson. Her Telethon call team generated a terrific response from our Old Members last year with gifts and pledges in excess of £240k – a Keble record! Camilla's report below sets out how these funds are being used to support our students, the College community and facilities.

Thank you to all those who have made a contribution to Keble in 2009-10; your ongoing support is greatly appreciated and enables us to plan ahead with confidence.

The Talbot Fund Report 2009-10

by Camilla Matterson, Senior Development Officer

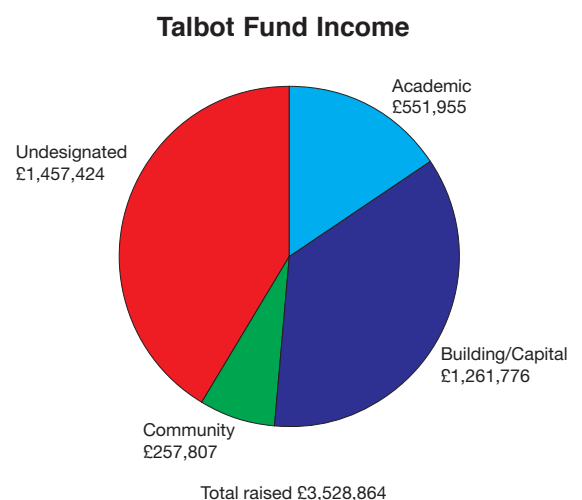
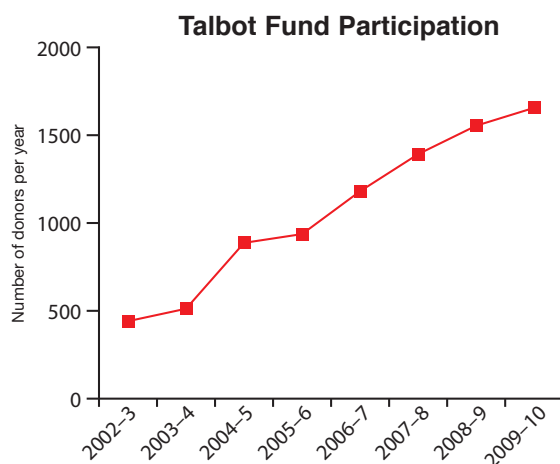
The Talbot Fund was set up at the end of 2001 to encourage Old Members and Friends to help students at Keble. Since then, 38% of Old Members (OMs) have made a gift to the Fund and just over £3.5million has been raised. The Fund has become one of the strongest annual funds across the Collegiate University both in terms of participation and financial value. Our aim is for all OMs to participate at an affordable level.

In 2009-10 the combined total of **new pledges** from the Telethon, the Talbot Fund brochure (now sent to all OMs once a year), the tear-off forms in the *brick* and donations made online was **£807,823**.

In **cash income** we celebrated an increase of almost £200,000 on the previous year with a total of **£716,000**. This increase can in part be attributed to the tremendous response received from our recent push to raise funds for the new pipe organ, now under construction.

We are delighted that in addition to the strong support we receive from the UK, we have also seen an increase in donations from abroad this year, in particular from the USA. Also, a new initiative across 13 European countries has had an encouraging impact; Transnational Giving Europe (TGE) enables OMs and Friends resident in a participating country to support Keble while benefiting directly from the tax advantages in that country. <http://www.transnationalgiving.eu/tge/>

We are hugely grateful to all our donors at home and abroad.



...does make a difference



Making a Difference

In total, Old Members and Friends of Keble have made donations and pledges to the Talbot Fund of £3,528,864 of which £2,499,538 has been received to the end of this financial year. The following is a breakdown of funding allocation and the projects which rely on this support.

Undesignated Gifts - £1,457,324 pledged (£948,689 received)

Gifts which are undesignated are allocated by Governing Body to the area of greatest need. In 2001-7 this vital funding was allocated to academic projects, in 2007-8 these funds were directed to the restoration projects and since 2009 funds have been put towards academic projects to support students and underpin the tutorial system.

Academic Projects - £551,955 pledged (£438,184 received)

Oxford Opportunity Bursaries are jointly funded by the University and the College. This year, £227,000 was shared between 100 students, 25 students were awarded prizes such as the Denis Meakins Prize in Chemistry and the Michael Zola prize for best performance in a first Public Exam and 5 graduate students shared £23,000 in scholarship funding.

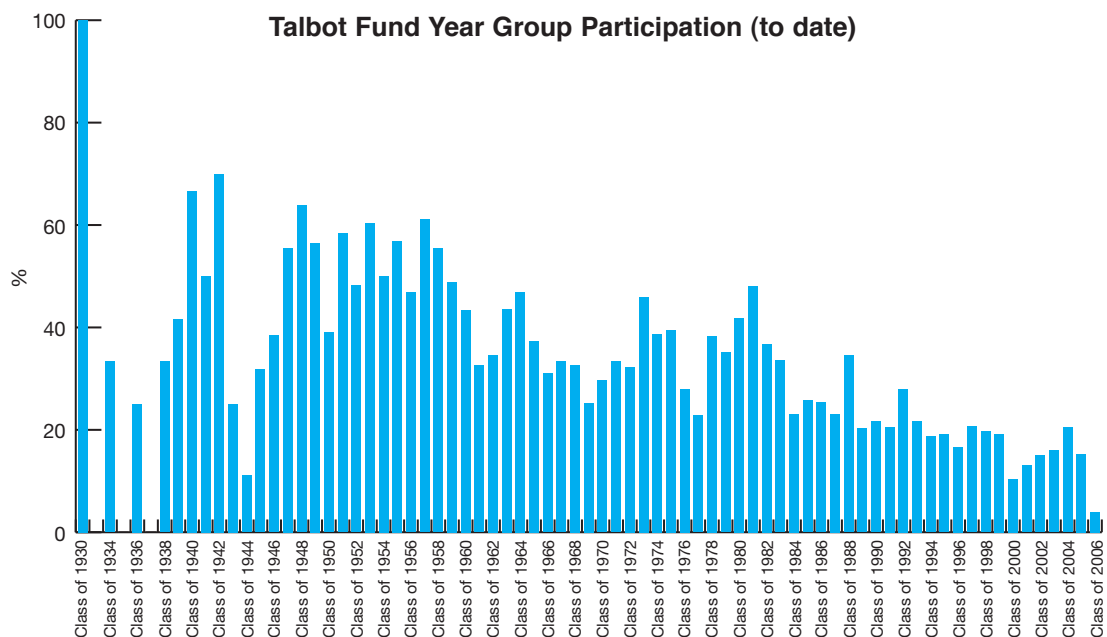
Community Projects - £267,632 pledged (£199,261 received)

The extra curricular life of students is an important part of the Oxford experience and there is no shortage of talent, enthusiasm or achievements at Keble. Funding for community projects is endowed so that long-term provision can be made to support our athletes, musicians and artists. Music receives £3,000 funding each year, drama £4,000 and sport £20,000. The Rowing Society and Neptune also provide funding and sponsorship for Keble's rowing crews.



Capital Projects - £1,261,776 pledged (£1,020,877 received)

The Hall remains at the heart of the Keble community. The restoration of the ceiling was completed in 2004. Sufficient tiles have been purchased for the Hall floor and the process of restoration will be phased over the coming years as finances permit. The last part of the Hall project is to clean and restore the walls which will finally bring the Hall back to its original glory. The Butterfield rooms and corridors on West Liddon have been restored and refurbished and the College intends to continue this rolling programme of restoration in the coming years. Funding for the new pipe organ has surpassed expectations – please see overleaf for further details.





A Lasting Legacy

In financial year 2009-10 Keble received gifts in excess of £265,000 from seven Old Members who had remembered the College in their wills. Such gifts are testament to the great affection former students hold for the College and their interest in the welfare of its students. Bequests received this year ranged between £500 and £155,000 and, whether large or small, they support the entire Keble community. Legacy gifts are invaluable in helping the College to reach its future goals and we are very grateful for this support.

Indeed, the College views legacy giving as a particularly special body of support and the Douglas Price Society was set up to recognise and thank Old Members and Friends who intend to make a bequest in favour of the College. Andreas Whittam Smith is the Society's current president. He has seen its membership grow to over 380 members since 2006. The Society meets once a year and on 19 February 2011 members will have an opportunity to meet the new Warden and attend, or even take part in, a debate with current students followed by a formal dinner in Hall. A debate between students and former students is, to the best of our knowledge, unprecedented in the College's history and we feel sure that it will prove to be a mutually stimulating and interesting evening. Invitations have recently been sent to members. For non-members who would like to find out more about the DPS a tear-off booking form is attached to this issue of *the brick*.

Pipe Dreams

Kenneth Tickell



Making the great rollerboard

Kenneth Tickell



Wood pipe mouths

Avid readers of *the brick* will know that pipe dreams do indeed come true! We announced in the Trinity *brick* that thanks to the generosity of over 250 Old Members and friends we have successfully reached our target of £675,000 for the new organ. Articles on pages 4 and 5 of this issue give more detail on the progress with the construction process and you can keep up to date on the College website. All donors will be honoured on a commemorative plaque by way of thanks and will be invited to College to see and hear the new organ in action next year.

Thank You!

Jason Sengel



College wishes to extend its gratitude to all Old Members and Friends for their support this year. Thank you for your part in helping Keble to nurture excellence, friendship and a strong sense of community. We will continue to do so with your help.

Give today, help the College thrive tomorrow!

For further information about ways you can help please see www.keble.ox.ac.uk/alumni/development

Or contact:

The Alumni & Development Office,
Keble College,
Oxford OX1 3PG

Tel: 01865 272794; Email: camilla.matterson@keble.ox.ac.uk

the brick

the brick is written, designed and produced by the Alumni and Development Office, with the assistance of current Keble students.

Producer/Designer: Seacourt Printing

Alumni and Development Office: Jenny Tudge, Ruth Cowen and Camilla Matterson

Published by Keble College, Oxford. Printed in the UK by Seacourt Printing. Distribution Services by Oxford Address

the brick is copyright © 2010 Keble College, Oxford, OX1 3PG. All rights of the individual contributors are reserved. No part of this publication may be reproduced or translated in any form, by any means mechanical, electronic or otherwise, without prior consent of the publisher. The views expressed are those of the writers and do not necessarily reflect those of the Governing Body of the College.



naturally responsible

Printed by **Seacourt** to the most stringent environmental systems using Waterless Offset (0% water and 0% Isopropyl alcohol or harmful substitutes), 100% renewable energy and vegetable oil based inks on paper with at least 75% recycled content. **Seacourt** is registered to EMAS and ISO 14001, is a CarbonNeutral® company and FSC certified TT-COC-2132.

Editors: Julian Bubb-Humfries, Lynn Edwards, Katy Fallon, Cordelia Hay, Jenni Hunt, Jason Sengel and Laura Wilson
Contributors and photographers: Kabir Bhalla, Aiden Brierley, Russell Egdell, Katy Fallon, James Hawkes, Rob Judges, Sophie Kershaw, Steve Kersley, Charles King, Aditi Nafde, Aparna Pal, Edward Pitt, Bianca Reisdorf, Jason Sengel, Chris Sibley, Jennifer Strawbridge, Kenneth Tickell, Andy Tingle, James Urry and Hongliang Zhang