

the brick

THE NEWSLETTER FOR KEBLE ALUMNI • ISSUE 60 • TRINITY TERM 2015 • WWW.KEBLE.OX.AC.UK

Charity Guest Night in Hall

Last year I spent a couple of months living and working for *HELP Nepal* (Helambu Education and Livelihood Partnership) in Gunsu, a village in the Helambu valley 70km North East of Kathmandu. When the worst earthquake in 80 years shook Nepal on 25 April, I was determined to do something to help the villagers who had made me so welcome.

To reach Gunsu is an 8 hour bus journey from Kathmandu, followed by a 5 hour up-hill trek. The valley is outstandingly beautiful with villages straight out of a story book. However, as fairytale-esque as it might appear, a village like Gunsu is plagued with socio-economic problems. The medical facilities are scarce and many of the children I was teaching were clearly malnourished. Despite these hardships the people of Gunsu were some of the most warm and welcoming I have ever met. Readily opening their homes to us at every opportunity, beckoning us in for tea the moment they saw us.



Teachers at the School in Gunsu with Ada Humphrey (centre)

I was shocked to learn of the destruction that has taken place there. Slowly as the weekend of the earthquake progressed news of the devastation started to reach us here in the UK. My main source of information came from a monk in the next village to Gunsu who had managed to call his family in London. It is heart-breaking to hear the situation in the valley. Many of the villages were almost entirely flattened and since then I have seen photos of places I once drank tea, strewn down the mountainsides. As people began to rally together, teams were sent to the villages helping to dig those trapped under the rubble. Sadly we have learnt that in Gunsu at least 90 have been confirmed dead, 30 of these children. It is only recently that aid and medical supplies are finally beginning to reach the villages of Helambu and *HELP Nepal* is coordinating most of the relief work.

Working with Hall Steward, Richard Gibbs, we established and held the first Charity Guest Night in late May asking students to

pay an additional £2 on every dinner ticket. Students were very supportive and Hall was packed! £520 was raised that evening and I was able to give the money directly to the Mondo Challenge, who work alongside *HELP Nepal* to deliver aid to the rural North East of the country. Following on from the success of the evening the JCR and MCR Committees have since agreed with the Domestic Bursar that Hall will hold a Charity Formal every term giving the JCR and MCR the choice of which charity to support.

There was another fundraiser for the Nepal earthquake this term involving the MCR, JCR some Fellows and three-legged racing. Pairs were sponsored and timed to race around the College quads. The aim was to get enough laps between everyone to add up to the length of a trek to Everest base camp. 44 took part including the Chaplain and the Director of Development (pictured left) and £150 was raised.

I have been really heartened by the response of Keble students, Fellows and Staff and that a new termly event has been set up to support charities. I would like to thank the MCR and JCR Committees who donated an additional £500 and £200 respectively to the Mondo Challenge for the Nepal Earthquake.

Ada Humphrey (2014 Archaeology and Anthropology)



in this issue:

college news • student life • news of old members • forthcoming events



Lisa Bendall, her nephew Isaac Bendall-Lavenstein and the Warden

New Junior Proctor

In March Dr Lisa Bendall, Tutorial Fellow in Archaeology and Sinclair and Rachel Hood Lecturer in Aegean Prehistory, was formally admitted as Junior Proctor for 2015-16 in a ceremony in the Sheldonian Theatre. The Warden presented her to the Vice-Chancellor and she was then given the Statutes and keys of the University. Afterwards, there was a celebratory lunch in Hall for Fellows, Staff and Lisa's family and guests.



Planting a Copper Beech Sapling in Pusey Quad

The Warden, together with Ade Roche and Aimee Irving Bell of the gardens and grounds team and flanked by Jenny Tudge and the Bursar, celebrate the planting of a second copper beech tree in Pusey Quad with the family of Mike Zola (1965), Josh, Ben (1995), Naomi and Julia (on the right) who gave the tree in his memory. The original copper beech, now 140 years old, has lost two major branches in the last ten years and in due course the "Zola tree" will replace it. **Roger Boden**

Meet the Poet

The Meet the Poet Series, which continues to grow in popularity, brought four terrific poets to the College this year. In November, the American poet, A E Stallings drew a large crowd from both Keble and the Faculty of Classics (where she was once a student). Then, on a cold February Friday, we hosted the amazing Alice Oswald, who packed out the Pusey Room and recited a series of short and long poems completely from memory. Later in the spring, we enjoyed a joint reading from two Liverpoolian poets, Jamie McKendrick and Peter Robinson, who read from their original poems as well as their translations followed by a fascinating Q&A relating to their work as translators.

Erica McAlpine (Career Development Fellow in English)



Cosmetic Peel for the Lodge Archway

Cleaning techniques for buildings have advanced considerably. Latex painted on and left to dry will peel off like a curtain removing the ingrained dirt and grime with it. This Cosmetic Peel method was used on the Lodge Archway by OG Stonemasonry in April to reveal the original brighter colour of the bricks, as part of the ongoing improvements to the Butterfield buildings.

Deirdre Tucker Memorial Prizes

Alistair Tucker (Law 1955) has generously endowed three subject prizes in memory of his wife Deirdre who sadly passed away last year. Their son, also Alistair, studied Maths at Keble in 1995. The undergraduate prizes for academic excellence are to be awarded in Law, Maths and Computer Science, and in French, a language and culture much loved by Deirdre. Alistair joined prize winners, Fellows and the Warden for a reception in College this term.



From left: the Warden, Luke Young and Jenny Tian (Maths), Alistair Tucker, Ben Waters (Law) and Tommy Siman (French)



David Vandell Design & Conservation

Proposed design

New Lift to Hall

An award of £225,000 from a grant-making trust with which an Old Member is associated has enabled us to progress with plans to install a new lift to Hall. The grand staircase to Hall involves a climb of 29 steps. There is a service lift for transporting food from the kitchen and at present this is the only means by which people who are unable to climb the stairs can gain access.

The proposed location for the lift is on the South facing wall, opposite the entrance to the College bar. It is the ideal location in terms of ease of access for wheelchair users and the integrity of the building. The design has the lift opening at the High Table dais which obscures it from the body of the Hall. The plans have been submitted for Listed Building Consent and pending agreement we anticipate completing construction by the end of Michaelmas Term 2015.



Departing on a Good Note

The final Sung Eucharist of the academic year marked Simon Whalley's last service as Director of Music. Simon has been part of the College as lecturer and then Fellow by Special Election in Music for almost 2 decades. He was influential in the selection and installation of the Tickell Pipe Organ. Since taking up the Director of Music post in 2005, Simon has also led the choir on international tours and produced 3 CDs, including a forthcoming collection of Advent music.

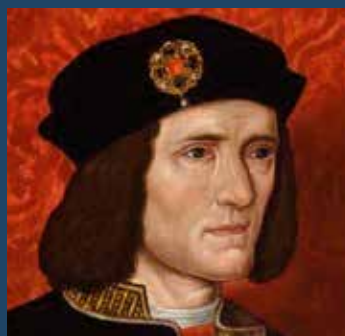
A reception was held after the service where Professor Dame Averil Cameron, the Warden, and the Chaplain offered words of thanks for Simon's contribution to the College community. Simon will begin a new role as Director of Music at St Mary the Virgin in Times Square, New York in September.

Jenn Strawbridge

The College is pleased to announce the appointment of Matthew Martin as new Director of Music from 1 October 2015. See: www.keble.ox.ac.uk

New Research Cluster - Relics

The latest addition to the College's interdisciplinary Advanced Studies Centre is a research Cluster dedicated to the study of objects of cultural, historical and religious significance. Relics are objects that survive from ancient times, often associated with the body of a deceased holy person or their belongings, and kept as objects of reverence or worship. The cluster comprises researchers from history, archaeological science, theology and chemistry. Recent research undertaken by some Cluster members includes the origins and spread of relics ascribed to St John the Baptist, which featured in a new CNN series. The Relics Cluster is partially funded by the National Geographic Expeditions Fund.



The launch of the Cluster will take place on Monday 12 October (5pm in the O'Reilly Theatre) with a lecture by Turi King and Jo Appleby of Leicester University, two of the scientists involved in investigating the remains of Richard III. All welcome. Visit www.keble-asc.com for more details

UK's Longest Running Weather Station: the Keble Connection

On 15 May, the UK Met Office presented an award to the Radcliffe Meteorological Station for its continuous climate observation over the last 200 years, making it the longest running weather station in the UK. The station has a long association with the College as Keble Fellows have held the role of Director since 1950; Professor Gordon Smith (1950-1983), followed by Professor Tim Burt (1983-1996) and the current Director, Professor Richard Washington.

Keble graduates have also contributed regularly to the task of taking observations at the station. Geography DPhil Amy Creese is one of two current students charged with the task as official RMS Met Observer. Further information at: <http://www.geog.ox.ac.uk/news/articles/150515-met-office-award.html>



Credit: Ian Curtis

Left to right: Tim Burt, Amy Creese, Stephen Burt (Science Writer, University of Reading), Ingrid Lunt (Acting Principal of Green Templeton College), Richard Washington, Phil Johnson (Regional Network Manager, the Met Office) and Callum Munday (DPhil Teddy Hall, supervised by Richard Washington)



Duke of York with Robin Bhaduri (middle) and Soham Trivedi (right).

Keble Student Wins Duke of York's Inspiring Digital Enterprise Award

Keble undergraduate Robin Bhaduri (2011 Chemistry) has won the Duke of York's Inspiring Digital Enterprise Award (IDEA), along with teammate Soham Trivedi (MSc Computer Science at Queen Mary University). The Inspiring Digital Enterprise Award is a new initiative for 14-25 year olds which aims to support young people in establishing successful digital businesses.

Bhaduri and Trivedi were presented the award for their development of 'Candle Path', an app that navigates you via the safest routes at night. The prize includes £15,000 of funding, as well as professional support from a number of iDEA partners including Microsoft Ventures, Barclays, Facebook to further develop their business ideas. Bhaduri and Trivedi were one of three winning teams. More information is available on the iDEA website.

Miss by a Tie-Break

During the Tennis Cuppers tournament we faced competition from Worcester, Queens and Magdalen, and won, notably beating last year's champions Worcester 4-2 to reach the final. In the final against St Catz with a final score of 3-3 and a game score 26-26, a doubles tie-break between the top pairs was inevitable and, unfortunately we fell just short of victory losing 11-9. Congratulations to the players pictured, and also Annie Koehli, Eleanor Edge and Jenn Strawbridge.

Olivia Hadjinicolaou (2013)



From left: Catherine Haigh, Kathleen Elysee, Clara Austera and Olivia Hadjinicolaou

MCR-SCR Biathlon

Volunteer representatives from the MCR and SCR respectively went head-to-head in the now celebrated MCR-SCR Biathlon: a



From left: MCR Contestants, Luke Martin and Seamus O'Hagan, and from the SCR Jenny Tudge and Roger Boden

gruelling trial of skill, speed and endurance across the two classic-Oxford activities – punting and croquet. After coming second last year the SCR team were victorious in both elements. The Bursar now holds the unofficial punting-speed record from Wolfson Bridge to the Victoria Arms in 9 minutes and 57 seconds. Alumni challengers welcome!

Artistic Director of National Theatre at Keble

This term, the O'Reilly Theatre hosted the Artistic Director of the National Theatre, Rufus Norris in conversation with Honorary Fellow, Robin Geffen (1975). Norris gave a fascinating insight into how he came to hold what is widely regarded as the biggest job in British Theatre, and, we learnt that Hilary Norris (1989), Keble's only woman Organ Scholar, is his sister!

Having a career with a focus on experimental theatre, he talked us through some of the techniques and processes he uses to create the work he does with emphasis on collaboration shining through. It was an enlightening evening for those interested in the theatre. His closing sentiment was to not talk about making a play or film but 'just get out there and do it'. I'm sure this rang true for all present. To hear the podcast: <http://podcasts.ox.ac.uk/series/keble-college>

Heloise Lowenthal (2013)

The *Gothic Revival Ball* in early May was reported to be the best ever, with light and sound provided by John McLean (1998) and his company Die Hard Productions.

John McLean





Matt Gompels, the Warden and Jonathan Mitchell with the much coveted cup

Rugby Cuppers Victory

Keble 1st XV reclaimed the Cuppers crown this term for the first time since 2011, beating arch rivals St Edmund Hall 37-11 in an expansive yet attritional contest at Iffley Road. In a reversal of 2012's final, tries from Captain Jonathan Mitchell, David Peberdy, Sam Egerton and Oakley Cox saw the College stretch to victory in front of a record crowd of delighted Keblites.

Matt Gompels (2012)



Telethon Team Pizza Night (From left: Katie Millard, Olivia Hadjinicolaou, Leanne Robinson, Jonny Mitchell, Eleanor Jaskowska, Vazgen Badalyan, Joelle Yeap, Sarah Shao, James Davies, Severin Limal, Rachel Fowden-Hulme, Elena Leonard, Zoe Tidman. Not in photo: Vaibhav Agarwal, Bas Carter, Alex Clarke, Helen Tatlow, Rob Weston.)

March Calling

A team of 18 students spoke to almost 800 Old Members during the telethon in March. Student callers are motivated to take part because they recognise how much the Talbot Fund enhances College life for all students and they are keen to help ensure this continues for future years. We are immensely grateful to the OMs who received a call, chatted with a student and made a gift. Over £175,000 was raised to support students via the Talbot Fund. Thanks too, to the student callers who proved to be wonderful ambassadors for both the College and the student body.

Camilla Matterson

Keble's Dark Blue Rowers

In an historic year for the Boat Race with the Newton Women's Race also being held on the Tideway, two Keble oarswomen were selected for the reserve crew, Osiris, Ruth Siddorn (2014) and Caroline Greves (MBA), which defeated the Cambridge Blondie crew. Will Geffen (2013) at Bow and Tom Swartz (MBA) at 4 seat were in the victorious dark blue men's boat while Joshua Bugajski (MSc) and Charles Thurston (2014) rowed in the winning Isis reserve boat. Both Will and Charles will represent the College at the 2015 Henley Royal Regatta in the double skulls Silver Goblets and Nickalls' Challenge Cup.



Naomi Baker Sports Photography

Will Geffen (left) and Tom Swartz



Jo Green (left) and Dani Edmunds

Dani Edmunds (2013) and Joanna Green (2011) rowed in the Women's lightweight Eight against Cambridge at Henley in March but lost by an agonising 3 feet. Four weeks later, however, the same crew won gold at the British Universities Championships (BUCS). Jo also won two Silvers in the BUCS Lightweight coxless 4 and coxless quad.

College Rowing

In Torpids three College crews were awarded Blades, M1 and W1, and M2. In Summer Eights sponsored by Neptune Investment Management, M1 were the only crew in the men's Divisions 1 and 2 to be awarded Blades. They finished 6th in Division 1 having bumped, St Catz, Balliol, Univ and Trinity. M3 moved up 7 places and a division to win Blades, and W1 moved up to 8th in Division 1, their highest position ever.



© Naomi Baker

Queen's Birthday Honours for 4 Keble Old Members



Andreas Whittam Smith CBE (1957)

First Church Estates Commissioner, a knighthood for public service particularly to the Church of England.



Andy Street (1982)

Managing Director of John Lewis, a CBE for services to Economic Growth and Chair, Greater Birmingham and Solihull Local Enterprise Partnership.



Caroline Criado-Perez (2009)

Journalist, an OBE for services to Equality and Diversity, particularly in the Media.



Peter Batey OBE (1977)

Chairman of Great Britain China Centre, a CMG for services to UK relations with China.

The 13 Wind

John Whitfield (1975), Founder and Director of Endymion Ensemble, has often conducted Mozart's glorious Serenade in Bb, K361, affectionately known as 'The 13 Wind'. After years of deliberating whether it could be done, he has produced a version for wind quintet, which he hopes retains some of Mozart's lovely sonorities. It is published as a set of Full Score and Parts by Phylloscopus Publications and printed and distributed by Spartan Press Music Publishers www.SpartanPress.co.uk.



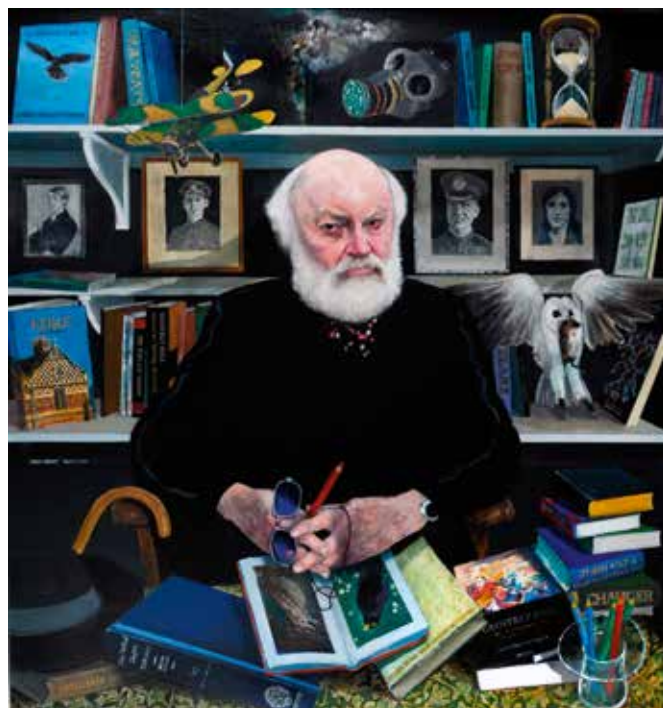
John McHale of Xpressions Photography

Flying the Flag for Alumni



Guy Collender (Modern History, 1998) is back in town as Head of Alumni Communications and Marketing at the University of Oxford's Alumni Office. His role involves promoting events and resources designed for the University's 250,000 alumni. In early 2015, Guy helped launch the Oxford Alumni Community – an online professional networking platform to help you connect with fellow graduates. Alumni can post and search for jobs and mentors, and search for classmates at www.oxfordalumni.org. Nearly 90 Keble Old Members have already signed up.

At the recent Alumni Weekend in Europe, Guy interviewed another Keble Old Member, BBC foreign correspondent Bethany Bell (Theology, 1987), about living in Vienna, journalism, and her memories of Oxford. Listen to the podcast at: www.bit.ly/bethanybellpodcast.



Geoffrey Hill Portrait

Geoffrey Hill delivered his valedictory Professor of Poetry lecture to a large audience in the Exam Schools in early May. During his stay in College a portrait painted by Keith Grant was unveiled. The portrait, an oil on canvas, shows Geoffrey in his study in Cambridgeshire surrounded by the books and objects that have significance in his life.

News of Old Members



Alumni Events in the USA

Thanks to alumni and friends in New York and San Francisco the Warden and I had a very enjoyable and successful trip in April.



The Warden with Gordon Bjork (1957) and his wife Susan in Joaquin Miller Park, San Francisco Bay area



Our stay in New York coincided with the BNY Mellon Boat Race and The Newton Women's Boat Race on Saturday 11 April. George Evans (1978) kindly hosted a Boat Race Brunch party where we celebrated a double victory for the Dark Blues. In San Francisco Keble alumni gathered for drinks at the Black Cat bar in the University Club. Thank you for supporting our events!

The next University North American Reunion will be in Washington DC over the weekend of 8-10 April 2016. We look forward to seeing you then.

Jenny Tudge, Director of Development



HengeMusic

HengeMusic, a new multi-media piece for saxophone and organ will have its world premiere in the Chapel on Thursday 29 October at 7.30pm. The music has been written by Honorary Fellow, David Owen Norris (1972), and the accompanying poems by Barney Norris (2006). Also illustrated with films by Rob Lambert it will show the passage of the seasons at Knowlton Rings in Dorset, a neolithic henge with a ruined Norman church at its centre. For details www.davidowebnorris.com

Four Returning MPs

After the Parliamentary Elections in May, four Keble Old Members have seats in the House of Commons. All four are returning Conservative Members of Parliament.



Philip Dunne (1977)
Ludlow Constituency. Minister of State for Defence Procurement
www.philipdunne.com/



Richard Harrington (1976)
Watford Constituency.
www.richardharrington.org.uk/



Phillip Lee (1993)
Bracknell Constituency.
www.phillip-lee.com/



Andrew Turner (1973)
Isle of Wight Constituency.
www.andrew-turner.org.uk/

Books



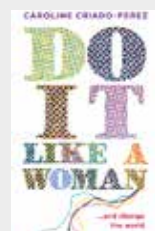
The Ninth Life of Bella Simkins

Jack Swaab (1936) has entered the world of electronic publishing in his 98th year! His children's book *The Ninth Life of Bella Simkins* has just been published online with Amazon, with illustrations by Andrew McDonald. It's a must-read for all fans of cats and time travel. Feel free to share with other readers, leave a review and send a word to the author (jack.swaab@hotmail.com).



Earth's Climate Evolution

Colin Summerhayes (MCR 1963), Emeritus Associate of the Scott Polar Research Institute of Cambridge University, has written *Earth's Climate Evolution*, describing climate change from the geological perspective. Our climate of the past 2000 years has been controlled by variations in Earth's orbit, modified by small changes in the Sun's output. This cooling period, Earth's neoglacal, culminated in the Little Ice Age (1250-1850). Colin concludes that we should still be in the Little Ice Age, but our emissions of carbon dioxide have pushed us out of this natural climatic home for Planet Earth.



Do It Like a Woman

Caroline Criado-Perez (2009) came to Blackwells in Oxford in mid-June promoting her first book *Do It Like a Woman... and Change the World*. In it she celebrates the achievements of women across the globe through a series of interviews with women explorers, poets and activists. Published by Portobello Books, May 2015.

Keble College Music Society

Keble College Music Society – see www.keblemusic.co.uk
for Events - Old Members welcome

Saturday 19 September

Pre-1965 Reunion

Invitations were emailed in May and posted, to those without email, in June.

Enquiries to Ruth Cowen

18 - 20 September

OU Alumni Weekend

For booking and the programme see www.alumniweekend.ox.ac.uk. The Keble Alumni and Development Office cannot take bookings for University events, but meals and accommodation at Keble can be booked by Old Members attending (a booking form is at www.keble.ox.ac.uk)

Friday 25 September

1965 Year 50th

Anniversary Lunch

Invitations will be posted in July
Enquires to Ruth Cowen



Douglas Price Society Lecture and Dinner

John Bridcut (1971), Director,
Crux Productions
Making Music on Film
Email invitations to members of
the Douglas Price Society and the
Talbot Society will be sent in July.
Enquiries to Ruth Cowen

Saturday 10 October

Ghosts v College fixtures

Please note: Old Members playing in or supporting the Ghosts matches (except 2015 Finalists) are not permitted in College or the College Bar on Saturday 10 October

Men's Football Match

College Sports Ground
Old Members wishing to play, please contact Andrew Tingle:

andytingle@hotmail.com or Brian Johns: shop@nannastoychest.co.uk
Players and supporters meet in The King's Arms at 11.30am on the day

Women's 7-a-side Football Match

The College side is a Keble-Hertford team.
College Sports Ground
Old Members wishing to play, please contact:

chantal.paine@hertford.ox.ac.uk

Men's Rugby Match

Keble Rugby Pitch, University Parks
Old Members interested in playing or providing vociferous support please contact Charles King:
charlesking38@gmail.com

For more details of events, booking forms and for booking online see:

www.keble.ox.ac.uk/alumni/events

Thursday 15 October

Donor Drinks Party

The Old Court, Lincoln's Inn,
London, WC2A 3TL
Friends, Patrons and Members of
the Warden's Court
By invitation only
Enquiries to Ruth Cowen

Tuesday 22 October

Entrepreneurs Evening

Smith and Williamson, 25 Moorgate,
London EC2R 6AY
6.15pm
Notification of online booking will
be in the Michaelmas Term E-Event
calendar

Enquiries to Chelsea Chisholm

Friday 13 November

Richardson Lecture

5.30pm Pusey Room



Thursday 19 November London Lecture

at Latham & Watkins,
99 Bishopsgate
Given by Mark Goldring (1976),
Chief Executive, Oxfam GB.
Notification of online booking
will be in the Michaelmas Term
E-Event calendar
Enquires to Ruth Cowen

Data Protection Statement Your data will be used by Keble College and members of the Old Members' network solely for organising events, producing and distributing publications, careers advice and fundraising. The data will not be passed without your permission to external organisations or individuals other than those acting as agents of the College or contracting to provide services to the College that entail access to the data. The College does not sell any data to third parties. For a copy of the College's full Alumni and Development Office Data Protection Statement go to: www.keble.ox.ac.uk/alumni/data_protection

2016 Reunion Date

1965 - 75s
Saturday 17 September

Keble online



follow @KebleAlumni



find the Keble College Oxford Alumni group



join the Keble College Oxford Alumni group
and/or the Keble Entrepreneurs group

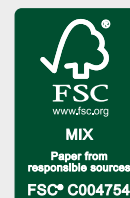


Your email address: As postal costs become more expensive it would be very helpful to email some event invitations. If you have not already done so, please let the Alumni and Development Office know your email address or inform us of any change to your email address.

Contacts:

Alumni and Development Office
Keble College
Oxford OX1 3PG
www.keble.ox.ac.uk/alumni
dev.office@keble.ox.ac.uk
alumni.events@keble.ox.ac.uk

Jenny Tudge (Director of Development) jenny.tudge@keble.ox.ac.uk (01865 272794)
Camilla Matterson (Deputy Director of Development) camilla.matterson@keble.ox.ac.uk (01865 282506)
Ruth Cowen (Alumni Relations Manager) ruth.cowen@keble.ox.ac.uk (01865 282338)
Philip Clarke (Data Manager) philip.clarke@keble.ox.ac.uk (01865 282303)
Sharon Thomas (Executive Assistant) sharon.thomas@keble.ox.ac.uk (01865 272794)
Chelsea Chisholm (Administrative Assistant) chelsea.chisholm@keble.ox.ac.uk (01865 272799)



the brick

the brick is written, designed and produced by the Alumni and Development Office with the assistance of current Keble students.

Producer/Designer: Hunts

Alumni and Development Office: Ruth Cowen, Jenny Tudge,
Camilla Matterson, Sharon Thomas, Philip Clarke and Chelsea Chisholm

Published by Keble College, Oxford. Printed and distributed in the UK by Hunts.

the brick is copyright © 2015 Keble College, Oxford, OX1 3PG. All rights of the individual contributors are reserved. No part of this publication may be reproduced or translated in any form, by any means mechanical, electronic or otherwise, without prior consent of the publisher. The views expressed are those of the writers and do not necessarily reflect those of the Governing Body of the College.

Contributors and photographers: Chris Beetle Gallery, Robin Bhaduri, Roger Boden, Boriana Boneva, John Bridcut, Sebastian Carter, Guy Collender, Amy Creese, Caroline Criado-Perez, Ian Curtis, Eleanor Fleetham, Matt Gompels, Olivia Hadjiniolaou, Tom Higham, Ada Humphrey, Heloise Lowenthal, Luke Martin, Erica McAlpine, John McLean, David Owen Norris, Yuri Silva-Velazquez, Oliver Robinson, Jenn Strawbridge, Colin Summerhayes, Jack Swaab, John Whitfield and David Yandell. Offices of Peter Batey, Philip Dunne, Mark Goldring, Richard Harrington, Phillip Lee, Andy Street, Andrew Turner and Andreas Whittam Smith.