

OXFORD OPPORTUNITY BURSARIES

Oxford University has recently announced details of its new bursary scheme — Oxford Opportunity Bursaries.

From October 2006, UK students from households with residual incomes under £16,000 a year will receive bursaries of £10,000 for a three year course. This will be made up of £4,000 in the first year — to help with extra start-up costs — and £3,000 a year thereafter. There will be slightly lower support for students with family income between £16,000 and £22,500, and then support on a sliding scale to a cut-off of £33,500 a year. There will be no cap on the number of Oxford Opportunity Bursaries available to students from low-income families who succeed in winning a place at Oxford, so there will be no competition for money, only competition for a place. The bursary scheme will use the results of the Government's own means testing as an assessment of household income.

These bursaries will be in addition to the levels of support available under the Government's own schemes for grants and loans. Taken together, this will mean that home students in the very lowest household income category should have their full essential living costs met while studying at Oxford. The scheme will be phased in from 2006–7 onwards as the existing scheme, which provides funding on a more modest scale, is phased out.

Welcoming the announcement, the Warden said, 'Keble played a leading role in the creation, three years ago, of the current scheme and we have consistently pressed for it to be made more generous and more inclusive. With the help of the Keble Association we have been able to do this to a modest degree for our own students. But the new scheme, which will coincide with the introduction of top-up fees, will provide much greater help and should ensure that no gifted student is prevented from taking up a place at Oxford because of financial considerations.'

Funding for the scheme will come from a combination of University and college sources. Roger Boden, Keble's Bursar, commented, 'With



the launch of the Talbot Fund two years ago, our Old Members were given the opportunity to nominate bursaries as the preferred destination for their endowment gifts. To date, the Fund has received a total of £560,000 of pledged sums, of which £85,000 has been specifically earmarked by donors for the endowment of bursaries and hardship grants. The College recognizes that this is an area of current need and has made a commitment to allocate up to £300,000 of undesignated funds for this purpose. This is a tremendous start and, so long as we continue to build the Fund, I'm confident we shall be able to provide appropriate levels of support to assist our student population.'

DIARY

May	Saturday 7	BA Day for 2004 Finalists <i>Some places are still available. 2003 Finalists who have not taken their degrees may enquire about places. Please contact Ruth Cowen.</i>	Friday 27	A Room with a View — the Aspiration of the Parish Church <i>Eric Symes Abbott Memorial Lecture, Revd Nicholas Holtam, St Martin-in-the-Fields, London, Chapel 5.30pm</i>	Saturday 28	Garden Party <i>Old Members can apply for tickets (£10 payable to Keble College) from the Development Office. Invitations have been extended to 2nd year undergraduates and 1st year graduates to invite members of their families.</i>	Keble Rowing Society AGM and Eights Week Dinner <i>Invitations will be sent out to members of the Society shortly. If you wish to join KRS, please contact the Development Office.</i>
	Jul	Friday 1 and Saturday 2	Reunion Weekend <i>For Old Members who matriculated between the years 1963–7. If you have not received your invitation, please contact Ruth Cowen.</i>		Saturday 16	KA AGM <i>Held in conjunction with the Trustees Meeting O'Reilly Theatre, 4.30pm Drinks Reception, 6.45pm</i>	Summer Dinner <i>Hall, 7.30pm. Booking form enclosed.</i>
Jul cont'd		Sunday 17	Family Day <i>Fun and games in the afternoon and lunch in Hall Booking form enclosed.</i>		Saturday 30	MA Degree Day <i>Invitations will be sent out in April to 1997 matriculands. If you do not receive an invitation and feel that you are eligible, please contact Ruth Cowen.</i>	

Contacts: Development Office, Keble College, Oxford OX1 3PG <http://www.keble.ox.ac.uk/alumni/>
 isla.smith@keb.ox.ac.uk (01865) 272786 • ruth.cowen@keb.ox.ac.uk (01865) 282338
 camilla.matterson@keb.ox.ac.uk (01865) 272794 • Fax (01865) 272735 • dev.off@keb.ox.ac.uk

The O'Reilly Theatre	May	Jun	Jun
	Tuesday 3–Saturday 7	Tue 31 May–Sat 4 Jun	Tuesday 14–Saturday 18
	East <i>by Steven Berkoff a Martin Esslin Society production</i>	Double Vision <i>Script by Julie Vatain and Yashar Alishenas. a Bilingual play of scenes from Oscar Wilde (The Importance of Being Earnest), Harold Pinter (The Dumb Waiter and A Slight Ache), Jean Tardieu (Finissez vos Phrases) and Eugene Ionesco (La Cantatrice Chauve).</i>	Children's Hour <i>by Lillian Hellman</i>
	Tuesday 17–Saturday 21		
	Philadelphia Here I Come <i>by Brian Friel</i>		
<i>all begin 7:30pm</i>	Box Office (01865) 305305 www.keble.ox.ac.uk/life/theatre/		

THE BRICK INTERVIEW: DAVID YANDELL

3

Alex Keenan (2003, Philosophy and Theology), Julianna Barnaby (2004, English) and Tessa Stanley-Price (2004, Modern Languages) interview David Yandell MA (Cantab) Dip. Arch. RIBA, of Feilden + Mawson, London who is Consultant Architect for College Conservation.

How did you get involved in architecture?

My involvement with architecture goes back to childhood, I was always making dens when I was a kid and then, when I looked down the list of degrees at Cambridge, it was the only one that I thought I could do!

What is special about your field of architecture and how will Keble benefit from it?

My particular speciality in architecture is not only understanding the origins and significance of buildings but also understanding how buildings are constructed and the kind of legal and heritage responsibilities that are imposed on historical locations such as Keble. I hope to be able to assist the College to appreciate what it has, make the most of it, care for it economically and modify it sensitively if need arises. I am a professional advisor on Listed Building matters and also advise the Buildings and Gardens Committee on a whole range of practical and aesthetic aspects of changes.

Which of your projects are you particularly proud of?

I was for a long time quite proud of a porch I had added to a suburban house. More recently the conversion and refurbishment of two Georgian houses (one by Robert Adam) in Portman Square, London W1, to house the now thriving club, Home House, was thrilling and demanding. Work on Somerset House (the former government building on the Strand) now a growing centre for the arts, has also required high standards and the need to grapple with complexity. One project of which I am particularly proud was providing a home for the Wernher Collection at Rangers House, Greenwich. This was an 'arranged marriage' between a fabulous collection and an underused fine building which appears to have succeeded.

How do Sloane Robinson and ARCO fit in with the Butterfield buildings?

They fit in sufficiently well to be compatible with them, especially as similar roof heights were maintained. This was achieved by lowering the ground to allow an extra floor at basement level to have light and aspect. There are also mild contextual gestures which Rick Mather, the architect, made such as using bricks from the same source and in featuring slight patterning grooves on the buildings. However, in designing the new buildings, Mather decided to throw the large interior spaces open to the exterior, different

to the Butterfield buildings with their higher ratio of wall to window.

What future plans do you have for the College?

One of the most important projects is for the gradual reversal of inappropriate changes made to the Butterfield interiors so that ultimately they will resemble how they were originally. This will include repairing the staircases with pure stonework and bringing back the oaks (the outer sliding wooden doors to rooms). We hope to rid the corridors of gloominess and monotony. Also, the refitting of rooms for greater functionality is high on the priority list. It will be a very extensive programme and will take at least twelve years. We will continue to conduct regular inspections of the buildings to prevent decay, as well as a systematic approach to maintenance, to keep College costs down.

In your opinion, which is the best room in Keble?

It would have to be the Douglas Price Room in Sloane Robinson Building because of its openness and the relation it has with the outside space. It also provides a brilliant view of the west side of Liddon.

Do you have any special plans for the Chapel?

We are slightly concerned about the stained glass windows. Stained glass begins to become unstable after around a hundred and thirty years due to the degradation of the lead. Overhauling and cleaning the windows and possibly the walls could have a scintillating effect on the quality of the light.

How would you sum up your overall feelings of Keble?

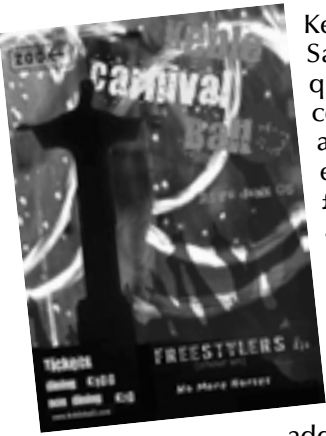
Keble has now all but fully developed its original site. It has done this in three major phases choosing brilliant architects who have all provided adventurous but successful buildings, which combine together well, aided by the emerging quality of the revitalized quads. No undergraduate in future should be able to ascribe his or her underachievement to shortcomings in their surroundings!



NEWS

4

Keble Carnival Ball



Keble Carnival Ball 2005 is on Saturday 25 June. The high quality carnival entertainment combined with unlimited food and drink promises a fantastic evening! Dining tickets are £100, non-dining £70 and are available to all Keble members, past and present, and their guests. Please send cheques payable to 'Keble College Ball' to Ishveen Jolly at Keble along with name, contact number/ address and dietary preferences if dining. We look forward to seeing you there!

www.kebleball.com

Mark Butchers

After five years as Chaplain, Mark Butchers is leaving Keble at the end of March to move the short distance to St Peters Church, Wolvercote where he will be in charge of the parish. We are pleased that the proximity of his placement will mean he will be able to visit.

His last official engagement was Evensong at the recent Reunion weekend on Saturday 19 March. It was a great pleasure for him to have a completely full house for this occasion. We wish Mark, Hilary and the children all best wishes in their new home.



Keble Hospitality

On the first weekend of February 40 graduate students finally moved into Keble's Acland site with more to follow shortly. After my guided tour, I must admit to being pleasantly surprised. The changes have happened quickly and there are still hints of the building's origins, but the overall feeling was homely. It is spacious and light and there is a quad garden; the rooms are well equipped, all with internet connection, most being en suite with a bath (enough to make any undergraduate jealous) and there are good kitchen facilities. After the fight the College had to get the site, it must be a relief to have students finally installed.

■ Marie Houghton



Raising the Bar



△ 15 March...

Construction work seems to be going according

to plan and Keble students eagerly await the grand opening next term.

to plan and Keble students eagerly await the grand opening next term.

■ Samantha Grey



△ ...17 March ready for Reunion weekend for pre 1956s

Tai Chi comes to Liddon

On a cold windy day on Tuesday of Arts Week, we were presented with an interesting proposal: the opportunity to stand on the hallowed ground of Liddon Quad *and* to practise tai chi. This was a chance too good to miss! It felt slightly odd standing on the quad being watched as we did various stretches and movements, but it proved to be worth it. Standing on the sacred grass was fun, the tai chi was definitely something I'd like to try again (possibly in a warmer situation though!), and we even provided some free mid-essay entertainment for everyone with rooms in Liddon!

■ Marie Houghton



photo by Patrick Foster

Battle of the Bands

Having always envied people who can play the guitar, the *Battle of the Bands* evening, held in the O'Reilly on Wednesday of Arts Week, was possibly not the best thing for me to go to, as I was faced by talented guitarist after talented guitarist. The four bands and one solo artist were all very impressive. There were acts from several colleges including one all-Keble band, *On the Real*, who showed that we can be extremely proud of our College. The winners, a trio called *Pepper*, including one Keble member, were worthy victors, combining guitar, violin and cello to great effect. All the bands, however, were well worth a watch and it was a very enjoyable night.

Battle of the Bands forms part of a programme of fundraising events organized by Down and Out in aid of Cancer Research UK. Please see page 7 for further information

■ Marie Houghton

Guardian reports O'Reilly triumph
The Guardian awarded 4 stars to the recent production, *Jackson's Way*. Hopefully, the O'Reilly is now firmly on the national theatre map.



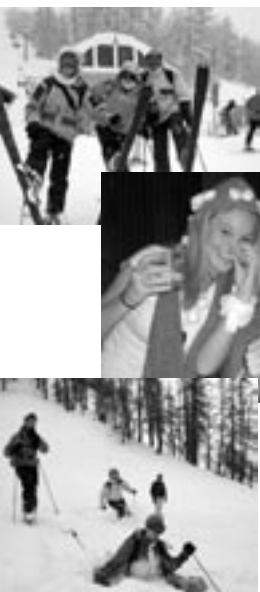
SPORT

6

Ski Trip

This was the biggest Keble Ski Trip to date with 69 Keble undergraduate and graduate students visiting Serre Chevalier in the French Alps. Lots of fresh snow meant a great week was had by all, from complete beginners to trained instructors. Special thanks to the KA for their generous support which allowed some students to come who would not otherwise have been able to afford the trip.

■ Andy Nulty



MCR Football retains League lead

The loss of several defenders and a goalkeeper meant some team shuffling if the MCR were to retain their league title. With James Southern in goal and 'new boy' Paul Donovan in defence, Keble cruised to two wins out of two. Sterner tests followed as Lincoln proved defiant, forcing a 3–3 draw. But the real test of who would win the league came with the last two games against fellow hopefuls Corpus–Linacre and St John's. Corpus was dispatched by a combination of an Ian Painter goal and a resolute display from a team missing four regular starters. A draw with John's proved enough to reach the league final, where a 2–0 victory over Queen's meant Keble became the first team to retain a MCR league title.

■ Robin Owen



Train Hard — Bump Easy

Congratulations to the women's first eight who bumped Exeter, Brasenose, Lincoln and St John's in Torpids to win blades.



Netball

Keble netballers reached the quarter finals in Cuppers in February, only to be narrowly defeated by two goals. With weekly matches during Michaelmas and Hilary, netball has proved to be a popular sport amongst Keble girls (and the occasional boy!). Keble has been able to field both a first and a second team on most occasions and team spirit has thrived, both on and off the court, due to the numerous and well-attended netball socials! The success of the team is largely due to captains Camilla Mathews and Ishveen Jolly, who have organized matches so well and given such encouragement.

Special mention must go to Keble's Blue, Emily Northin (left) who has shown extreme commitment to her College side as well as playing for the Blues since October 2004.

■ Samantha Grey & Tessa Stanley-Price



Table Football

This term saw the first Table Football black tie and the players certainly had a lot to celebrate: Keble now has four teams of six players and the future looks bright with ten eager Freshers signed up to play. Recent successes include the promotion of the 3rd team to Division II and the naming of Nicholas Wright (2002 Physics) as top 1st singles player in his division. Improvements to the 4th team have been huge with an increase of 32 points in one term alone, leaving them narrowly missing promotion. Keble players are now attending national tournaments, often beating professional players. Watch this space for updates on the teams' progress in next term's doubles Cuppers!

■ Chaz Allen and Emily McLeod



Nigel Brook-Walters (on left) and Mark Drew were part of a strong team for Varsity Rugby League on 2nd March. Despite Oxford leading 16–0 at half-time, Cambridge fought back to win 17–16.

Keble out in force at the Zambezi Centenary Regatta

In October 2004 graduate crews from Oxford and Cambridge competed in the Zambezi Centenary Regatta at Victoria Falls against Rhodes and Rand Afrikaans Universities.

Keble was very well represented with Ed Coode (Gold medal GB Four Athens, BB 1998) and James Roycroft (BB 1997,1998) in the men's and Anna Longdill (BB 2004) and me (Osiris 2000/2001) in the women's.



We were very privileged to be invited to compete in such a unique regatta. Training on the Zambezi was a far cry from the Thames – we had to contend with hippos, crocodiles and herds of elephant. Against the backdrop of the bush and the Falls, it really was an extraordinary place to row. On the final day, when each race was covered by two armed hunters in fast patrol boats, the South Africans won the major races but they were hard-pressed by Cambridge Men and Oxford Ladies who finished second in the 2000m races. The hospitality from the people of Livingstone and great sportsmanship from all the crews made the week very special.

Down and Out from London to Paris

In July 2005, Mike Jakeman (left) and Matt Williams, two Keble second year students are walking 250 miles from London to Paris raising money for Cancer Research UK. Inspired by Mike's mum's struggle with ovarian cancer, the pair aim to raise £10,000. They would warmly welcome any donations from Keble alumni through their website for this venture. www.downandout.org.uk



Mike and Matt are also organizing a charity auction in May and would welcome any interesting, idiosyncratic objects or promises to sell. For more details on how you can help, please email phoebe@downandout.org.uk.

■ Caroline (Caz) Bailey (1998)



■ Phoebe Wood-Wheelhouse

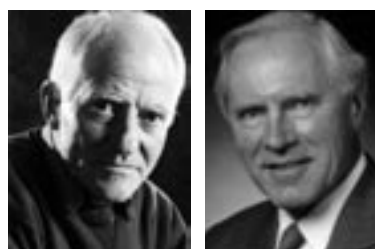
Tori leaves Keble

After three years in the Development Office, Tori Roddy has gone to pastures new working for the United Learning Trust near her home in Northampton. During the time that she worked at the College, it would be fair to say that she laid very firm foundations for the long-term success of the Talbot Fund. Her quiet efficiency, not to mention her complete mastery of the Raiser's Edge database, is already sorely missed. Good luck to her and Ian and we hope that the lack of commuting 100 miles each day means that they can enjoy their home and surroundings in Northampton to much greater effect.

■ Isla Smith

Antipodean Honours

By a most unlikely coincidence, the names of two alumni, exact contemporaries at Keble, appear next to each other in the New Zealand New Year's list of honours. Martyn Sanderson and Michael Selby have both been appointed Officers of the New Zealand Order of Merit (ONZM), Sanderson for services to literature and the theatre and Emeritus Professor Selby for services to education.



△ Martyn Sanderson (left) and Michael Selby

AND FINALLY...

Festive frolics

Keble's annual children's party, on 19 December, provided fun and games for 30 children who were entertained by Arnold Swapshisknickers the Clown (Richard Knight), were visited by Santa (Richard again). A big thank you to Richard Knight for making it such a success.



Fellows Portraits

Bob Tulloch has added to his excellent series of portraits of Fellows with two more, Dr Larry Siedentop (left) and Dr Richard Hawkins, who retired at the end of last year.



Big G wins silver



Gerritjan Eggenkamp (2001) was one of the Dutch crew which was narrowly beaten by the GB boat at the Athens Olympics 2004. 'We were delighted to win a silver medal as beforehand we were only hoping to make the final; in the pre-race commentary, we were a notable absentee in the possible medallist shortlist'.

Keble Furniture

As part of the conservation statement being put together by David Yandell (see page 3), we are recording and photographing items of furniture and fittings which were once to be found throughout the College.

Thank you to David Woollett (1971) and Matthew Ross (1996) for starting our collection of pictures of

prized College items. The Development Office would be happy to receive pictures of other items (we can scan and return any photos).

Question: Does anyone know when the oaks were removed from Liddon and Pusey Quad rooms? Answers on a postcard please!

